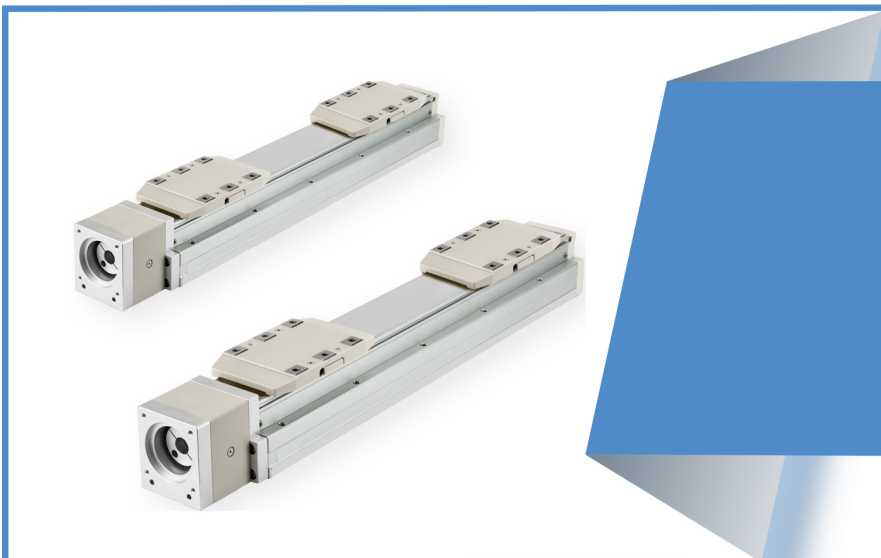
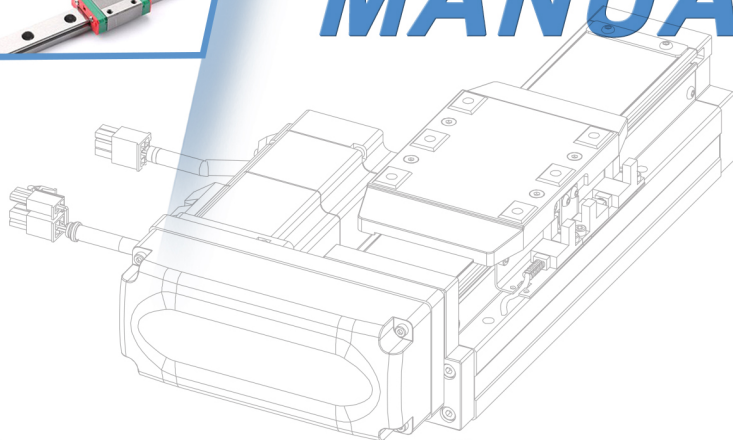


LINEAR ACTUATOR GTHA





PRODUCT MANUAL



SCREW TECHNOLOGY CO.,LTD.

Transmission parts and supporting mechanical parts.
Linear transmission components, such as single-axis and multi-axis components.
Motors, controllers, sensors, encoders, etc.
Design, assembly and debugging of non-standard automation equipment, etc.

-  Professional Customization
-  Precision Machining
-  High Quality Assurance

SMALL

GTHA4



Width: 44mm
Max. stroke: 800mm
Max. payload: 25kg

P6

SMALL

GTHA5



Width: 54mm
Max. stroke: 800mm
Max. payload: 30kg

P14

MEDIUM

GTHA8



Width: 82mm
Max. stroke: 1100mm
Max. payload: 50kg

P18

LARGE

GTHA12

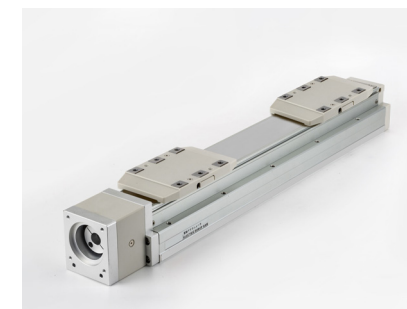


Width: 120mm
Max. stroke: 1250mm
Max. payload: 110kg

P26

SMALL

GTHA5S



Width: 54mm
Max. stroke: 325mm
Max. payload: 30kg

P30

SMALL

GTHA8S



Width: 82mm
Max. stroke: 450mm
Max. payload: 50kg

P34

Spec Inde

GTHA Built-in LM Guide Electric Actuator - Slider Type

Environment	Driven Mode	Model	Motor Output (W)	Width(mm)	Repeatability (mm)	Ball Screw Spec (C7)		Maximum Payload(kg)		Maximum Speed (mm/s)					
						Outer Diameter (mm)	Lead(mm)	Horizontal	Vertical						
Standard	Ball Screw	GTHA4	50W	44	±0.01	10	2	25	8	100					
							6	20	5	300					
							12	12	2	600					
			100W				2	25	8	100					
							6	20	8	300					
							12	12	3.5	600					
		GTHA5	100W	54	±0.01	12	2	30	10	100					
							5	30	10	250					
							10	15	5	500					
							20	10	2.5	1000					
							GTHA8	200W	82	±0.01	16	5	50	15	250
												10	30	8	500
		400W	120	±0.01	16	20	18	3	1000						
						5	110	33	250						
						10	88	22	500						
						20	40	10	1000						
				32	30	8	1600								

Stroke(mm) & Maximum Speed(mm/s)																												Speed			Page
Stroke	50	100	150	200	250	300	350	400	450	500	550	600	650	700	750	800	850	900	950	1000	1050	1100	1150	1200	1250	1300	1350				
						100						90	80	70	60	50															
						300						270	240	210	180	150															
						600						540	480	420	360	300															
						100						90	80	70	60	50															
						300						270	240	210	180	150															
						600						540	480	420	360	300															
						100						90	80	70	60	50															
						250						270	200	175	150																
						500						450	400	350	300																
						1000						900	800	700	600																
							250										225	200	175	150	125	100	75								
							500										450	400	350	300	250	200	150								
							1000										900	800	700	600	500	400	300								
								250										225	200	175	167	158	150	133	125	117					
								500										450	400	350	333	317	300	267	250	233					
								1000										900	800	700	667	633	600	533	500	467					
								1600										1440	1280	1120	1067	1013	900	853	800	747					

Dual Carriage Synchronous Movement In Reverse Direction

Environment	Driven Mode	Model	Motor Output (W)	Width(mm)	Repeatability (mm)	Ball Screw Spec (C7)		Maximum Payload(kg) M		Maximum Speed (mm/s)
						Outer Diameter (mm)	Lead(mm)	Horizontal	Vertical	
Standard	Ball Screw	GTHA5S	100W	54	±0.01	12	2	30	10	100
		GTHA8S	200W	82	±0.01	16	5	50	15	250
			400W							

Stroke(mm) & Maximum Speed(mm/s)																																Speed			Page
	25	50	75	100	125	150	175	200	225	250	275	300	325	350	375	400	425	450	475	500	525	550	575	600	625	650	675								



Max. Stroke	800mm	Max. Speed	600mm/s	Motor Output	50W	Ball Screw	φ10mm
-------------	-------	------------	---------	--------------	-----	------------	-------

GTHA4 - L2 - 100 - BC - M05B - C4 - 0001

Model Stroke Motor Position Motor Brand, Power Output Home Sensor Limit Sensor Customization Order No.

50-800mm	50mm Pitch
----------	------------

BC	Motor Exposed
BM	Motor Bottom Side
BL	Motor Left Side
BR	Motor Right Side

M	Mitsubishi	05	50W	B
P	Panasonic	10	-	
Y	Yaskawa	20	-	
T	Delta	40	-	
If No Brake, No Description				

C	Outside
D	Motor Side
E	Opposite Motor Side
NO SENSOR	
No Sensor	

3	1 P c
4	2 P c
NO SENSOR	
5	No Sensor

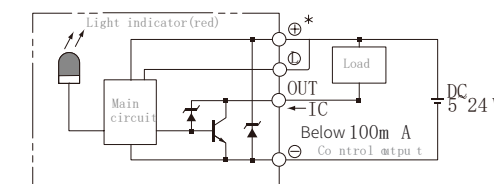
When the stroke is 50mm, the sensor installation has the following restrictions:
1. Home sensor and limit sensor has to installed on the different side or body.
2. Both Sides of slider need to install the sensor trigger device.

2	2mm
6	6mm
12	12mm

Specification

Spec	Repeatability (mm)	±0.01			
	Ball Screw Lead (mm)	2	6	12	
	Max. Speed (mm/s)	100	300	600	
	Max. Payload	Horizontal (kg)	25	20	12
		Vertical (kg)	8	5	2
	Rated Thrust (N)	424	141	71	
	Stroke/Pitch (mm)	50-800m/50mm Pitch			
Parts	AC Servo Motor Ouput (W)	50			
	Ball Screw Ø (mm)	C7φ10			
	Coupling (mm)	7x8			
	Home Sensor	Outside	EE-SX674(NPN)		

Sensor Layout



Allowable Moment

Horizontal Installation		A	B	C	Wall Installation		A	B	C	Vertical Installation		A	C
Lead 2	12kg	1000	55	80	Lead 2	12kg	80	55	1000	Lead 2	4kg	200	200
	18kg	750	35	50		18kg	50	35	750		8kg	100	100
	25kg	500	23	32		25kg	32	23	500		-	-	-
Lead 6	10kg	550	53	70	Lead 6	10kg	70	53	550	Lead 6	3kg	200	200
	15kg	350	32	45		15kg	45	32	350		5kg	120	120
	20kg	250	22	31		20kg	31	22	250		-	-	-
Lead 12	8kg	305	59	75	Lead 12	8kg	75	59	305	Lead 12	1.5kg	350	350
	10kg	240	45	57		10kg	57	45	240		2kg	260	260
	12kg	195	37	47		12kg	47	37	195		-	-	-

Static Loading Moment

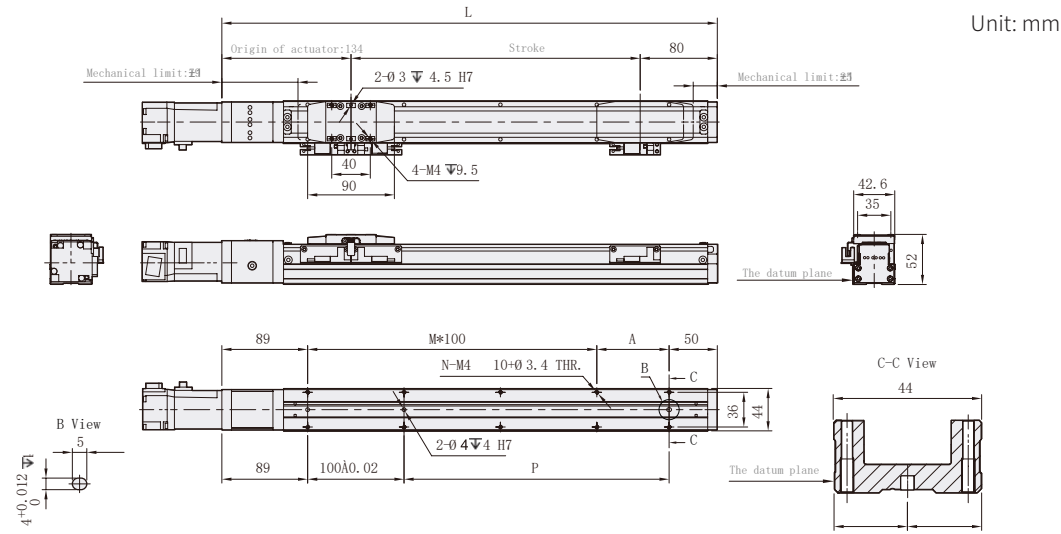
MY	79
MP	79
MR	116

The torque value in the chart indicate the center of gravity. Operation life is 10,000km when the product is using under the specified conditions. Data information is not for ceiling-mount inverse use. Contact us for the details if you want to apply ceiling-mount inverse usage.

Suitable Motor Brand

Brand	Mark	Brake	Walt	AC-Voltage	Motor Model	Driver Model
Mitsubishi	M	No Brake (Horizontal Type)	50	220	HG-KR053	MR-J4-10A
		With Brake (Vertical Type)	50	220	HG-KR053B	MR-J4-10A
Panasonic	P	No Brake (Horizontal Type)	50	220	MSMD5A2G1U	MADHT1505
		With Brake (Vertical Type)	50	220	MSMD5A2G1V	MADHT1505
Delta	T	No Brake(Horizontal Type)	50	220	ECMA-C1040FES	ASD-B20121-B
		With Brake(Vertical Type)	50	220	ECMA-C1040FFS	ASD-B20121-B

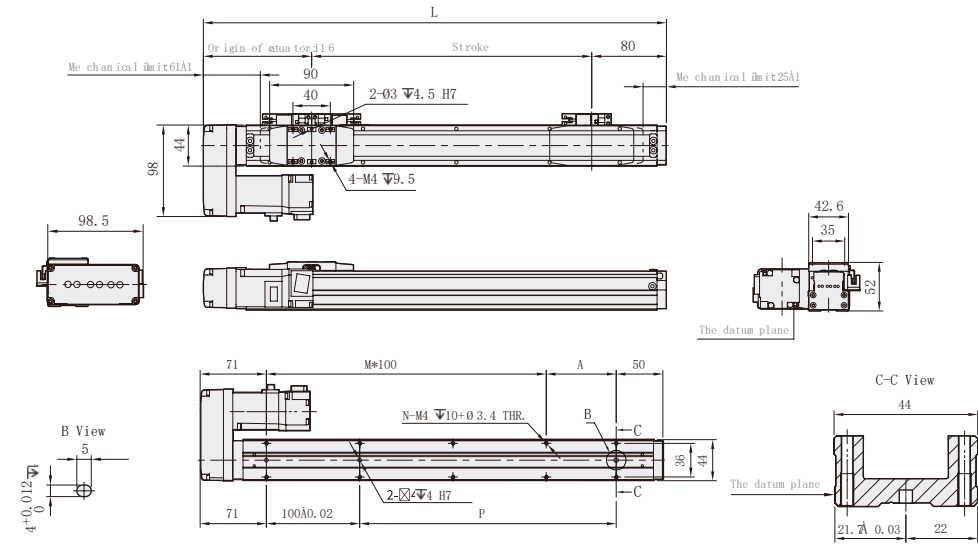
Motor Exposed



Unit: mm

Stroke	50	100	150	200	250	300	350	400	450	500	550	600	650	700	750	800
L	264	314	364	414	464	514	564	614	664	714	764	814	864	914	964	1014
A	25	75	25	75	25	75	25	75	25	75	25	75	25	75	25	75
M	1	1	2	2	3	3	4	4	5	5	6	6	7	7	8	8
N	6	6	8	8	10	10	12	12	14	14	16	16	18	18	20	20
P	25	75	125	175	225	275	325	375	425	475	525	575	625	675	725	775
KG	0.95	1.12	1.29	1.47	1.65	1.83	2.01	2.19	2.37	2.55	2.73	2.91	3.09	3.27	3.45	3.63

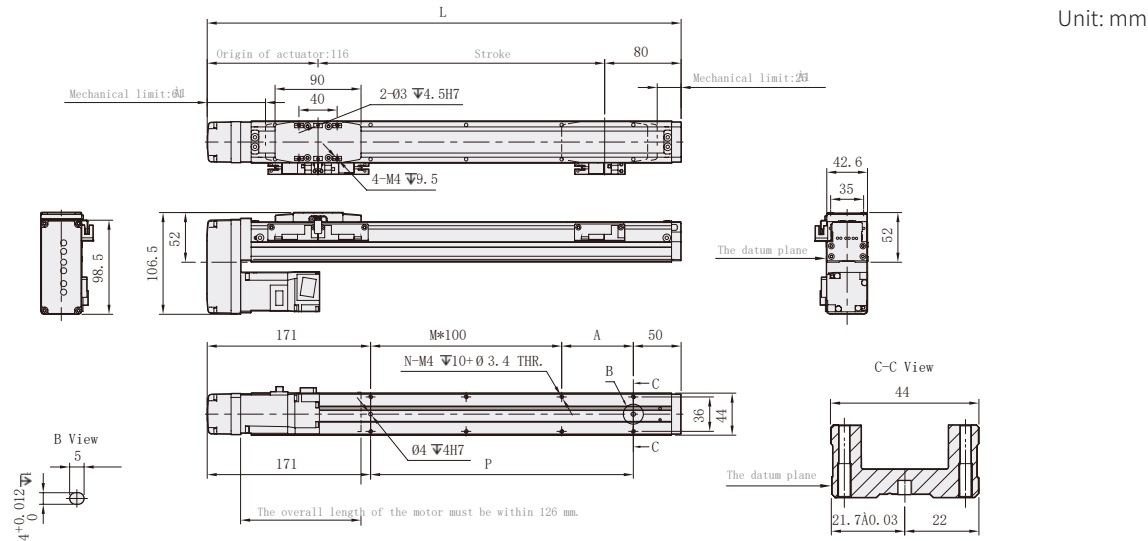
Motor Left Side



Unit: mm

Stroke	50	100	150	200	250	300	350	400	450	500	550	600	650	700	750	800
L	246	296	346	396	446	496	546	596	646	696	746	796	846	896	946	996
A	25	75	25	75	25	75	25	75	25	75	25	75	25	75	25	75
M	1	1	2	2	3	3	4	4	5	5	6	6	7	7	8	8
N	6	6	8	8	10	10	12	12	14	14	16	16	18	18	20	20
P	25	75	125	175	225	275	325	375	425	475	525	575	625	675	725	775
KG	1.04	1.22	1.40	1.58	1.76	1.94	2.12	2.30	2.48	2.66	2.84	3.02	3.20	3.38	3.56	3.74

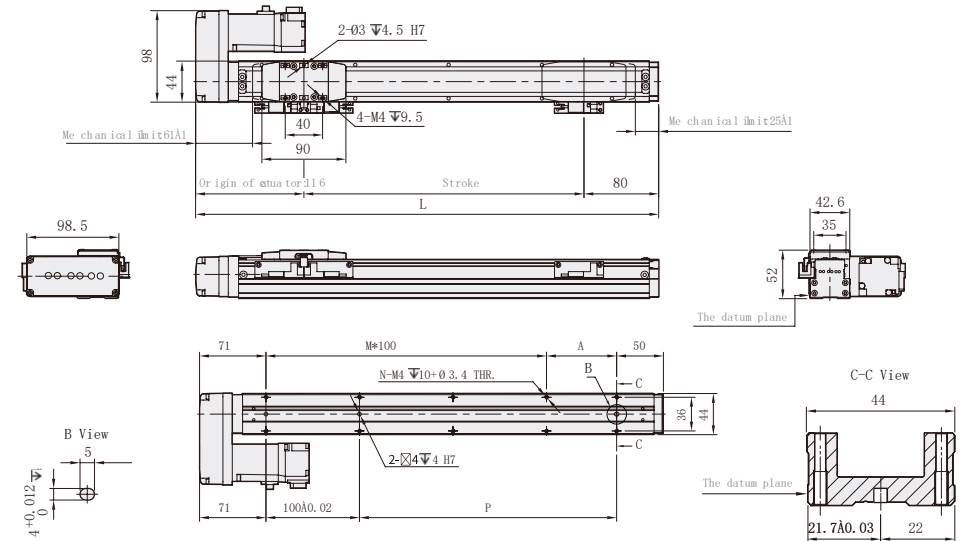
Motor Bottom Side



Unit: mm

Stroke	50	100	150	200	250	300	350	400	450	500	550	600	650	700	750	800
L	246	296	346	396	446	496	546	596	646	696	746	796	846	896	946	996
A	25	75	25	75	25	75	25	75	25	75	25	75	25	75	25	75
M	1	1	2	2	3	3	4	4	5	5	6	6	7	7	8	8
N	6	6	8	8	10	10	12	12	14	14	16	16	18	18	20	20
P	25	75	125	175	225	275	325	375	425	475	525	575	625	675	725	775
KG	1.04	1.22	1.40	1.58	1.76	1.94	2.12	2.30	2.48	2.66	2.84	3.02	3.20	3.38	3.56	3.74

Motor Right Side



Unit: mm

Stroke	50	100	150	200	250	300	350	400	450	500	550	600	650	700	750	800
L	246	296	346	396	446	496	546	596	646	696	746	796	846	896	946	996
A	25	75	25	75	25	75	25	75	25	75	25	75	25	75	25	75
M	1	1	2	2	3	3	4	4	5	5	6	6	7	7	8	8
N	6	6	8	8	10	10	12	12	14	14	16	16	18	18	20	20
P	25	75	125	175	225	275	325	375	425	475	525	575	625	675	725	775
KG	1.04	1.22	1.40	1.58	1.76	1.94	2.12	2.30	2.48	2.66	2.84	3.02	3.20	3.38	3.56	3.74



Max. Stroke	800mm	Max. Speed	600mm/s	Motor Output	100W	Ball Screw	φ10mm
-------------	-------	------------	---------	--------------	------	------------	-------

GTHA4 - L2 - 100 - BC - M10B - C4 - 0001

Model | **Stroke** | **Customization Order No.**

Stroke: 50-800mm, 50mm Pitch

Ball Screw Lead

2	2mm
6	6mm
12	12mm

Motor Position

BC	Motor Exposed
BM	Motor Bottom Side
BL	Motor Left Side
BR	Motor Right Side

Motor Brand, Power Output

M	Mitsubishi	05	-	B
P	Panasonic	10	100W	
Y	Yaskawa	20	-	
T	Delta	40	-	
If No Brake, No Description				

Home Sensor

Outside	
C	Motor Side
D	Opposite Motor Side
NO SENSOR	
E	No Sensor

Limit Sensor

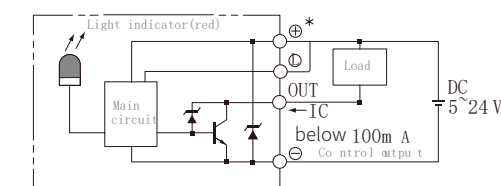
Outside	
3	1 P c
4	2 P c
NO SENSOR	
5	No Sensor

When the stroke is 50mm, the sensor installation has the following restrictions:
1. Home sensor and limit sensor has to installed on the different side or body.
2. Both Sides of slider need to install the sensor trigger device.

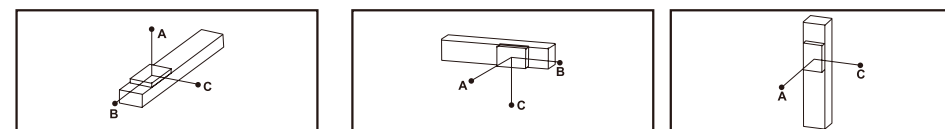
Specification

Spec	Repeatability (mm)	±0.01			
	Ball Screw Lead (mm)	2	6	12	
	Max. Speed (mm/s)	100	300	600	
	Max. Payload	Horizontal (kg)	25	20	12
		Vertical (kg)	8	5	2
	Rated Thrust (N)	424	141	71	
Parts	Stroke/Pitch (mm)	50-800m/50mm Pitch			
	AC Servo Motor Output (W)	100			
	Ball Screw Ø (mm)	C7φ10			
	Coupling (mm)	7x8			
Home Sensor	Outside	EE-SX674(NPN)			

Sensor Layout

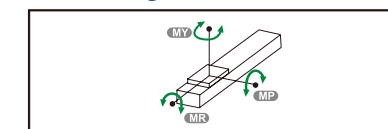


Allowable Moment



Horizontal Installation		A	B	C	Wall Installation		A	B	C	Vertical Installation		A	C
Lead 2	12kg	1000	55	80	Lead 2	12kg	80	55	1000	Lead 2	4kg	195	195
	18kg	750	35	50		18kg	50	35	750		8kg	100	100
	25kg	500	23	32		25kg	32	23	500		-	-	-
Lead 6	10kg	550	53	70	Lead 6	10kg	70	53	550	Lead 6	4kg	150	150
	15kg	350	32	45		15kg	45	32	350		8kg	75	75
	20kg	250	22	31		20kg	31	22	250		-	-	-
Lead 12	8kg	305	59	75	Lead 12	8kg	75	59	305	Lead 12	2kg	260	260
	10kg	240	45	57		10kg	57	45	240		3.5kg	150	150
	12kg	195	37	47		12kg	47	37	195		-	-	-

Static Loading Moment



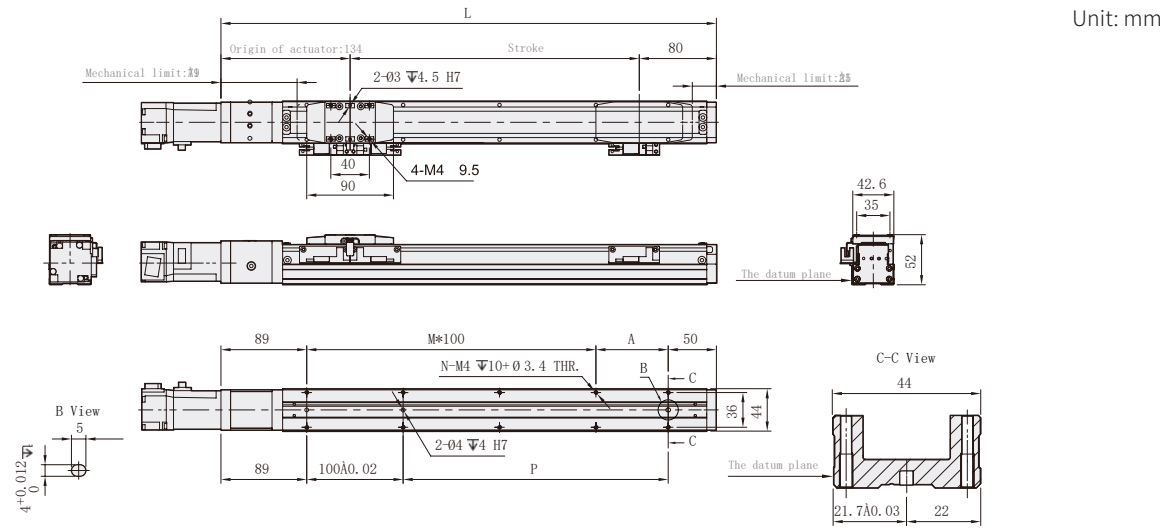
MY	79
MP	79
MR	116

The torque value in the chart indicate the center of gravity. Operation life is 10,000km when the product is using under the specified conditions. Data information is not for ceiling-mount inverse use. Contact us for the details if you want to apply ceiling-mount inverse usage.

Suitable Motor Brand

Brand	Mark	Brake	Walt	AC-Voltage	Motor Model	Driver Model
Mitsubishi	M	No Brake (Horizontal Type)	100	220	HG-KR13	MR-J4-10A
		With Brake (Vertical Type)	100	220	HG-KR13B	MR-J4-10A
Panasonic	P	No Brake (Horizontal Type)	100	220	MSMD012G1U	MADHT1505
		With Brake (Vertical Type)	100	220	MSMD012G1V	MADHT1505
Delta	T	No Brake(Horizontal Type)	100	220	ECMA-C20401ES	ASD-B20121-B
		With Brake(Vertical Type)	100	220	ECMA-C20401FS	ASD-B20121-B

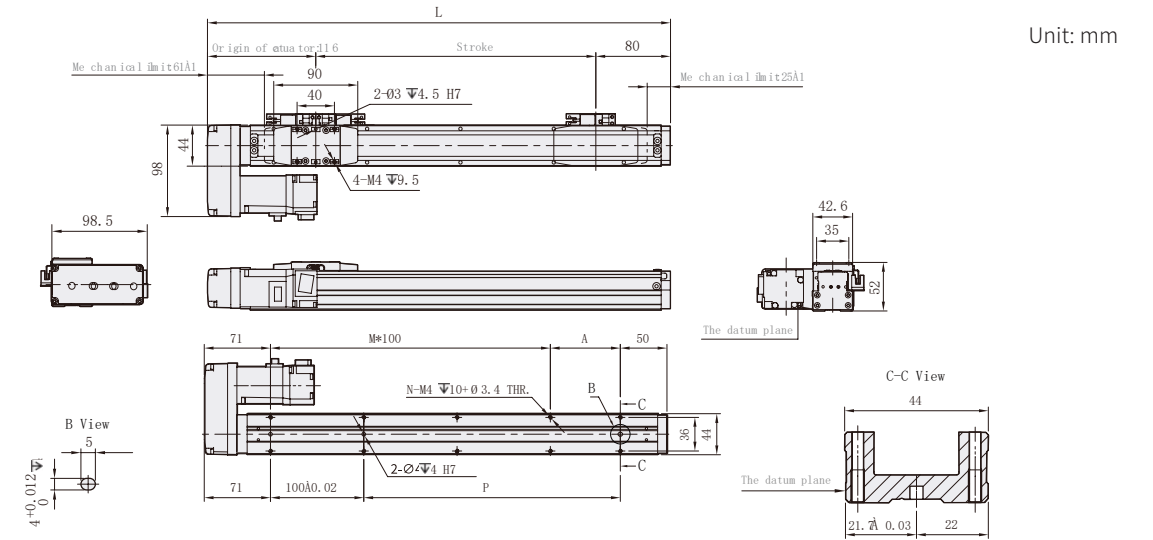
Motor Exposed



Unit: mm

Stroke	50	100	150	200	250	300	350	400	450	500	550	600	650	700	750	800
L	264	314	364	414	464	514	564	614	664	714	764	814	864	914	964	1014
A	25	75	25	75	25	75	25	75	25	75	25	75	25	75	25	75
M	1	1	2	2	3	3	4	4	5	5	6	6	7	7	8	8
N	6	6	8	8	10	10	12	12	14	14	16	16	18	18	20	20
P	25	75	125	175	225	275	325	375	425	475	525	575	625	675	725	775
KG	0.95	1.12	1.29	1.47	1.65	1.83	2.01	2.19	2.37	2.55	2.73	2.91	3.09	3.27	3.45	3.63

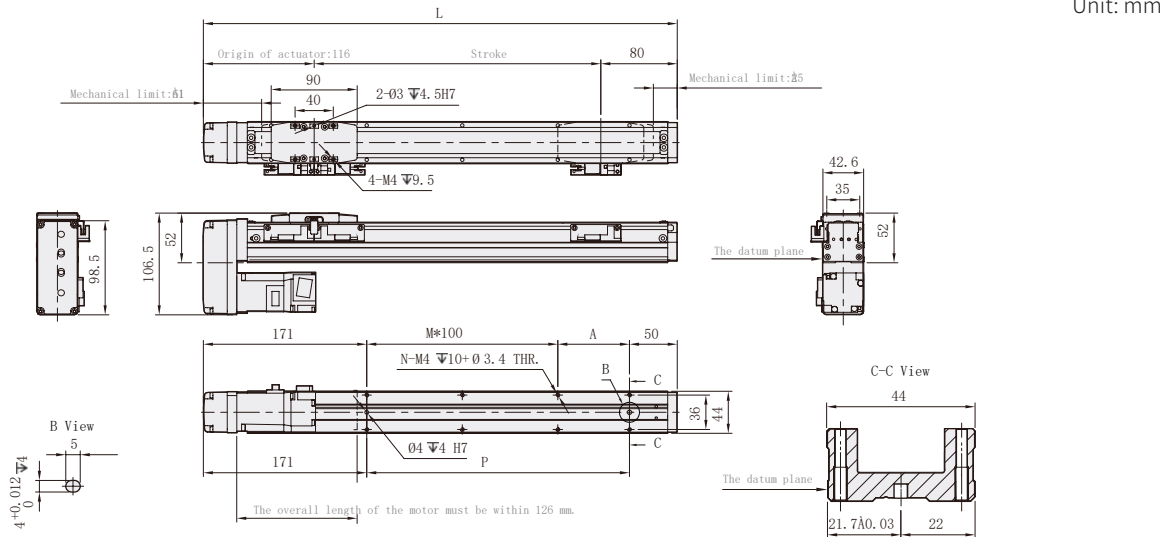
Motor Left Side



Unit: mm

Stroke	50	100	150	200	250	300	350	400	450	500	550	600	650	700	750	800
L	246	296	346	396	446	496	546	596	646	696	746	796	846	896	946	996
A	25	75	25	75	25	75	25	75	25	75	25	75	25	75	25	75
M	1	1	2	2	3	3	4	4	5	5	6	6	7	7	8	8
N	6	6	8	8	10	10	12	12	14	14	16	16	18	18	20	20
P	25	75	125	175	225	275	325	375	425	475	525	575	625	675	725	775
KG	1.04	1.22	1.40	1.58	1.76	1.94	2.12	2.30	2.48	2.66	2.84	3.02	3.20	3.38	3.56	3.74

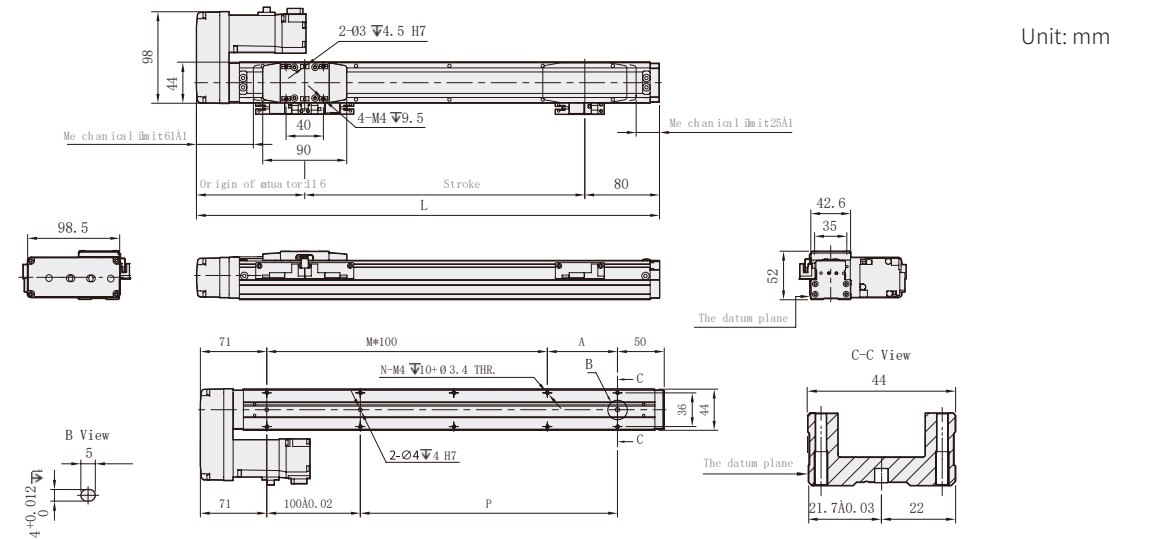
Motor Bottom Side



Unit: mm

Stroke	50	100	150	200	250	300	350	400	450	500	550	600	650	700	750	800
L	246	296	346	396	446	496	546	596	646	696	746	796	846	896	946	996
A	25	75	25	75	25	75	25	75	25	75	25	75	25	75	25	75
M	1	1	2	2	3	3	4	4	5	5	6	6	7	7	8	8
N	6	6	8	8	10	10	12	12	14	14	16	16	18	18	20	20
P	25	75	125	175	225	275	325	375	425	475	525	575	625	675	725	775
KG	1.04	1.22	1.40	1.58	1.76	1.94	2.12	2.30	2.48	2.66	2.84	3.02	3.20	3.38	3.56	3.74

Motor Right Side



Unit: mm

Stroke	50	100	150	200	250	300	350	400	450	500	550	600	650	700	750	800
L	246	296	346	396	446	496	546	596	646	696	746	796	846	896	946	996
A	25	75	25	75	25	75	25	75	25	75	25	75	25	75	25	75
M	1	1	2	2	3	3	4	4	5	5	6	6	7	7	8	8
N	6	6	8	8	10	10	12	12	14	14	16	16	18	18	20	20
P	25	75	125	175	225	275	325	375	425	475	525	575	625	675	725	775
KG	1.04	1.22	1.40	1.58	1.76	1.94	2.12	2.30	2.48	2.66	2.84	3.02	3.20	3.38	3.56	3.74



Max. Stroke	800mm	Max. Speed	1000mm/s	Motor Output	100W	Ball Screw	φ12mm
-------------	-------	------------	----------	--------------	------	------------	-------

GTHA5 - L5 - 100 - BC - M10B - C4 - 0001

Model | **Stroke** | **Customization Order No.**

Stroke: 50-800mm, 50mm Pitch

Ball Screw Lead

2	2mm
5	5mm
10	10mm
20	20mm

Motor Position

BC	Motor Exposed
BM	Motor Bottom Side
BL	Motor Left Side
BR	Motor Right Side

Motor Brand、Power Output

M	Mitsubishi	05	-	B
P	Panasonic	10	100W	
Y	Yaskawa	20	-	
T	Delta	40	-	

If No Brake, No Description

Home Sensor

Outside	
C	Motor Side
D	Opposite Motor Side
NO SENSOR	
E	No Sensor

When the stroke is 50mm, the sensor installation has the following restrictions:
 1. Home sensor and limit sensor has to be installed on the different side or body.
 2. Both Sides of slider need to install the sensor trigger device.

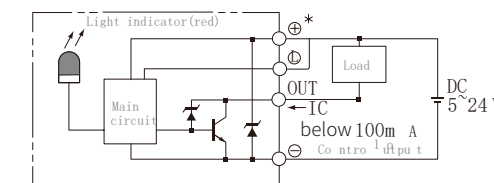
Limit Sensor

Outside	
3	1 P c
4	2 P c
NO SENSOR	
5	No Sensor

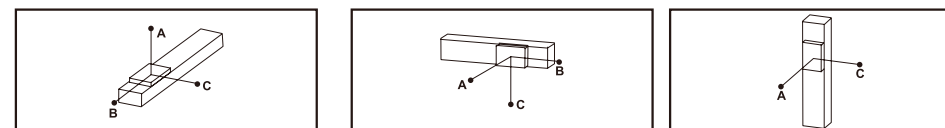
Specification

Spec	Repeatability (mm)	±0.01				
	Ball Screw Lead (mm)	2	5	10	20	
	Max. Speed (mm/s)	100	250	500	1000	
	Max. Payload	Horizontal (kg)	30	30	15	10
		Vertical (kg)	10	10	5	2.5
	Rated Thrust (N)	854	341	170	85	
	Stroke/Pitch (mm)	50-800m/50mm Pitch				
Parts	AC Servo Motor Output (W)	100				
	Ball Screw Ø (mm)	C7φ12				
	Coupling (mm)	7x8				
	Home Sensor	Outside	EE-SX674(NPN)			

Sensor Layout

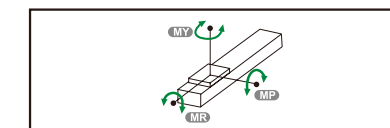


Allowable Moment



Horizontal Installation		A	B	C	Wall Installation		A	B	C	Vertical Installation		A	C
Lead 2	10kg	900	100	135	Lead 2	10kg	135	100	900	Lead 2	6kg	180	180
	20kg	700	45	60		20kg	60	45	700		8kg	135	135
	30kg	550	25	35		30kg	35	25	550		10kg	110	110
Lead 5	10kg	650	75	100	Lead 5	10kg	100	75	650	Lead 5	6kg	145	145
	20kg	440	32	45		20kg	45	32	440		8kg	110	110
	30kg	270	19	25		30kg	25	19	270		10kg	90	90
Lead 10	5kg	600	145	185	Lead 10	5kg	185	145	600	Lead 10	1kg	800	800
	10kg	370	70	85		10kg	85	70	370		3kg	260	260
	15kg	250	42	52		15kg	52	42	250		5kg	155	155
Lead 20	5kg	320	120	130	Lead 20	5kg	130	120	320	Lead 20	1kg	600	600
	8kg	220	70	88		8kg	88	70	220		2kg	300	300
	10kg	175	55	60		10kg	60	55	175		2.5kg	250	250

Static Loading Moment



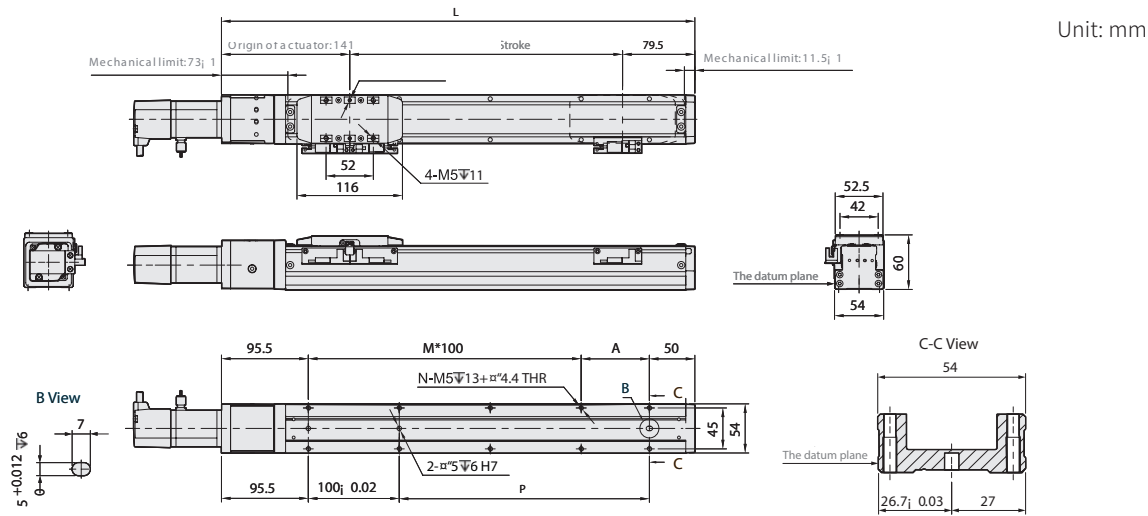
MY	103
MP	103
MR	144

力 The torque value in the chart indicate the center of gravity. Operation life is 10,000km when the product is using under the specified conditions. Data information is not for ceiling-mount inverse use. Contact us for the details if you want to apply ceiling-mount inverse usage.

Suitable Motor Brand

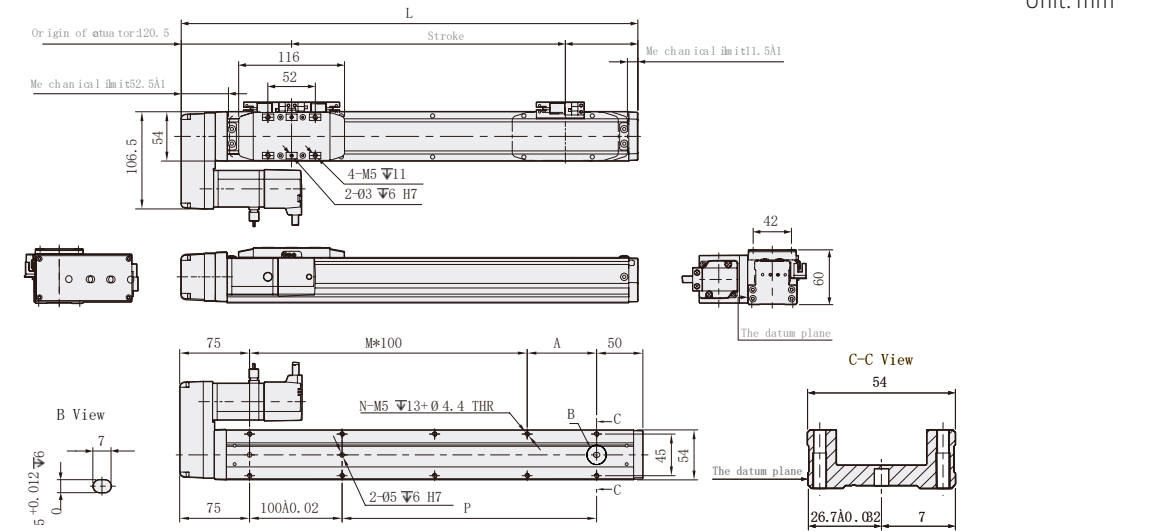
Brand	Mark	Brake	Walt	AC-Voltage	Motor Model	Driver Model
Mitsubishi	M	No Brake (Horizontal Type)	100	220	HG-KR13	MR-J4-10A
		With Brake (Vertical Type)	100	220	HG-KR13B	MR-J4-10A
Panasonic	P	No Brake (Horizontal Type)	100	220	MSMD012G1U	MADHT1505
		With Brake (Vertical Type)	100	220	MSMD012G1V	MADHT1505
Delta	T	No Brake(Horizontal Type)	100	220	ECMA-C20401ES	ASD-B20121-B
		With Brake(Vertical Type)	100	220	ECMA-C20401FS	ASD-B20121-B

Motor Exposed



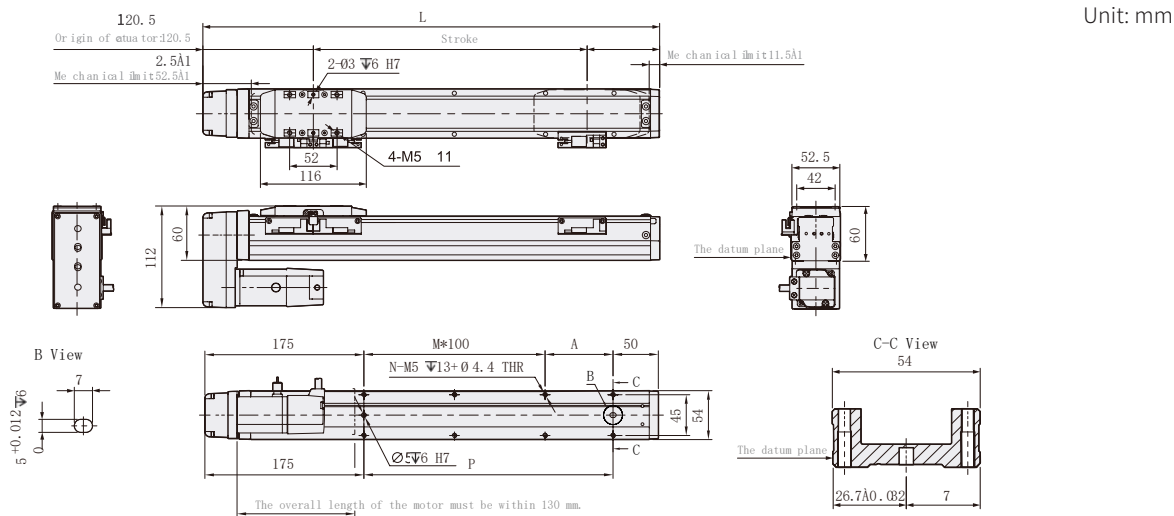
Stroke	50	100	150	200	250	300	350	400	450	500	550	600	650	700	750	800
L	270.5	320.5	370.5	420.5	470.5	520.5	570.5	620.5	670.5	720.5	770.5	820.5	870.5	920.5	970.5	1020.5
A	25	75	25	75	25	75	25	75	25	75	25	75	25	75	25	75
M	1	1	2	2	3	3	4	4	5	5	6	6	7	7	8	8
N	6	6	8	8	10	10	12	12	14	14	16	16	18	18	20	20
P	25	75	125	175	225	275	325	375	425	475	525	575	625	675	725	775
KG	1.65	1.79	1.92	2.11	2.39	2.50	2.52	2.75	2.86	2.95	3.15	3.28	3.44	3.58	3.71	4.09

Motor Left Side



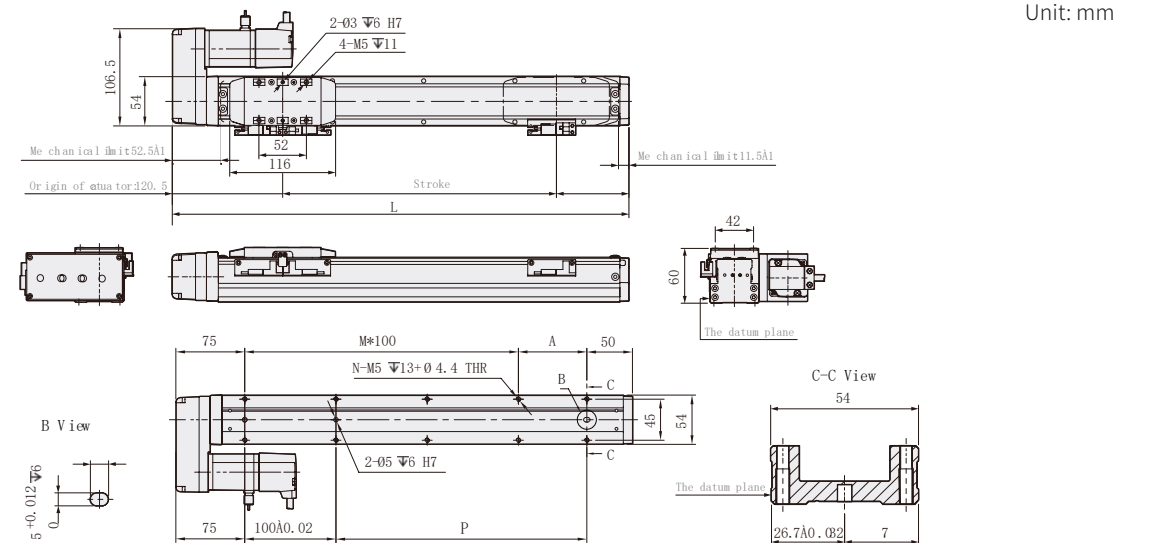
Stroke	50	100	150	200	250	300	350	400	450	500	550	600	650	700	750	800
L	250.5	300.5	350.5	400.5	450.5	500.5	550.5	600.5	650.5	700.5	750.5	800.5	850.5	900.5	950.5	1000.5
A	25	75	25	75	25	75	25	75	25	75	25	75	25	75	25	75
M	0	0	1	1	2	2	3	3	4	4	5	5	6	6	7	7
N	4	4	6	6	8	8	10	10	12	12	14	14	16	16	18	18
P	25	75	125	175	225	275	325	375	425	475	525	575	625	675	725	775
KG	1.68	1.80	2.03	2.14	2.42	2.53	2.58	2.78	2.89	2.98	3.18	3.31	3.47	3.60	3.74	4.12

Motor Bottom Side



Stroke	50	100	150	200	250	300	350	400	450	500	550	600	650	700	750	800
L	250.5	300.5	350.5	400.5	450.5	500.5	550.5	600.5	650.5	700.5	750.5	800.5	850.5	900.5	950.5	1000.5
A	25	75	25	75	25	75	25	75	25	75	25	75	25	75	25	75
M	0	0	1	1	2	2	3	3	4	4	5	5	6	6	7	7
N	4	4	6	6	8	8	10	10	12	12	14	14	16	16	18	18
P	25	75	125	175	225	275	325	375	425	475	525	575	625	675	725	775
KG	1.68	1.80	2.03	2.14	2.42	2.53	2.58	2.78	2.89	2.98	3.18	3.31	3.47	3.60	3.74	4.12

Motor Right Side



Stroke	50	100	150	200	250	300	350	400	450	500	550	600	650	700	750	800
L	250.5	300.5	350.5	400.5	450.5	500.5	550.5	600.5	650.5	700.5	750.5	800.5	850.5	900.5	950.5	1000.5
A	25	75	25	75	25	75	25	75	25	75	25	75	25	75	25	75
M	0	0	1	1	2	2	3	3	4	4	5	5	6	6	7	7
N	4	4	6	6	8	8	10	10	12	12	14	14	16	16	18	18
P	25	75	125	175	225	275	325	375	425	475	525	575	625	675	725	775
KG	1.68	1.80	2.03	2.14	2.42	2.53	2.58	2.78	2.89	2.98	3.18	3.31	3.47	3.60	3.74	4.12



Max. Stroke	1100mm	Max. Speed	1000mm/s	Motor Output	200W	Ball Screw	φ16mm
-------------	--------	------------	----------	--------------	------	------------	-------

GTHA8 - L10 - 100 - BC - M20B - C4 - 0001

Model | **Stroke** | **Customization Order No.**

Stroke: 50-1100mm, 50mm Pitch

Ball Screw Lead

2	2mm
5	5mm
10	10mm
20	20mm

Motor Position

BC	Motor Exposed
BM	Motor Bottom Side
BL	Motor Left Side
BR	Motor Right Side

Motor Brand、Power Output

M	Mitsubishi	05	-	B
P	Panasonic	10	100W	
Y	Yaskawa	20	-	
T	Delta	40	-	
If No Brake, No Description				

Home Sensor

Outside	
C	Motor Side
D	Opposite Motor Side
NO SENSOR	
E	No Sensor

Limit Sensor

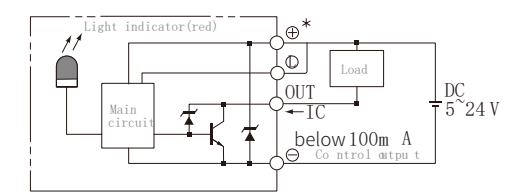
Outside	
3	1 P c
4	2 P c
NO SENSOR	
5	No Sensor

When the stroke is 50mm, the sensor installation has the following restrictions:
 1. Home sensor and limit sensor has to installed on the different side or body.
 2. Both Sides of slider need to install the sensor trigger device.

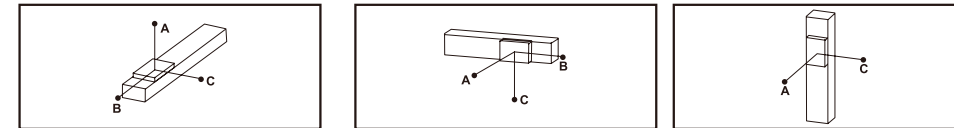
Specification

Spec	Repeatability (mm)	±0.01			
	Ball Screw Lead (mm)	5	10	20	
	Max. Speed (mm/s)	250	500	1000	
	Max. Payload	Horizontal (kg)	50	30	18
		Vertical (kg)	15	8	3
	Rated Thrust (N)	683	341	174	
	Stroke/Pitch (mm)	50-1100m/50 Pitch			
Parts	AC Servo Motor Output (W)	200			
	Ball Screw Ø (mm)	C7φ16			
	Coupling (mm)	10x14/11			
	Home Sensor	Outside	EE-SX674(NPN)		

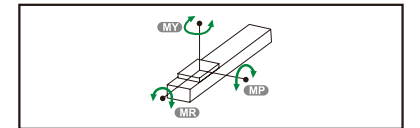
Sensor Layout



Allowable Moment



Static Loading Moment



Horizontal Installation		A	B	C	Wall Installation		A	B	C	Vertical Installation		A	C
Lead 5	20kg	1560	153	237	Lead 5	20kg	214	153	1435	Lead 5	10kg	331	331
	35kg	890	81	126		35kg	113	81	845		15kg	220	220
	50kg	550	53	82		50kg	74	53	506		-	-	-
Lead 10	10kg	1730	286	412	Lead 10	10kg	370	286	1400	Lead 10	5kg	589	589
	20kg	839	136	196		20kg	176	136	800		8kg	368	368
	30kg	541	86	124		30kg	112	86	495		-	-	-
Lead 20	6kg	1213	403	493	Lead 20	6kg	444	403	760	Lead 20	3kg	935	935
	9kg	800	264	323		9kg	292	264	277		-	-	-
	18kg	592	194	238		18kg	214	194	544		-	-	-

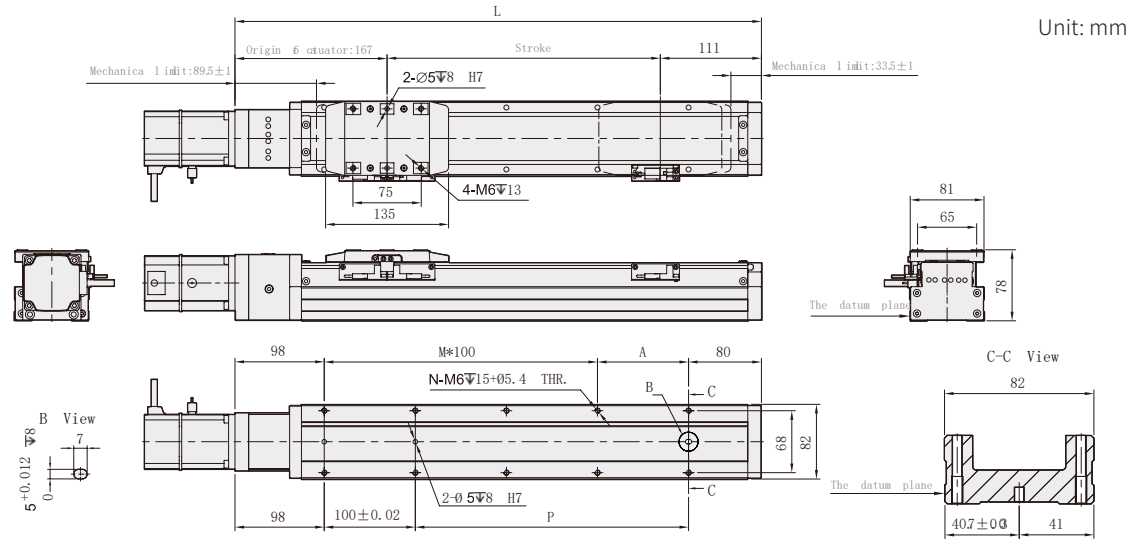
MY	318
MP	318
MR	626

The torque value in the chart indicate the center of gravity. Operation life is 10,000km when the product is using under the specified conditions. Data information is not for ceiling-mount inverse use. Contact us for the details if you want to apply ceiling-mount inverse usage.

Suitable Motor Brand

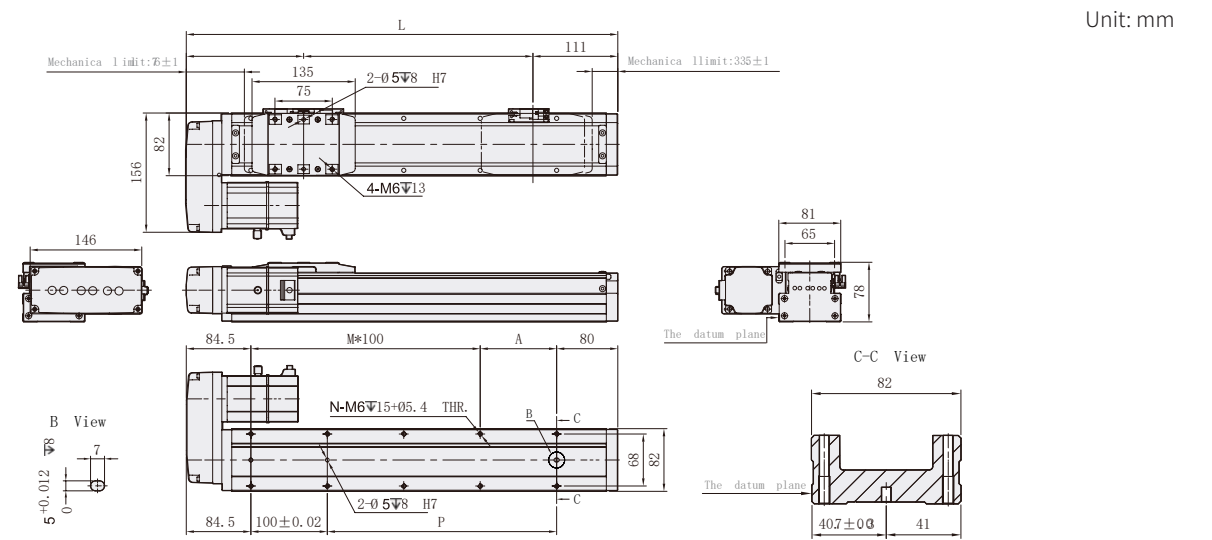
Brand	Mark	Brake	Walt	AC-Voltage	Motor Model	Driver Model
Mitsubishi	M	No Brake (Horizontal Type)	200	220	HG-KR23	MR-J4-20A
		With Brake (Vertical Type)	200	220	HG-KR23B	MR-J4-20A
Panasonic	P	No Brake (Horizontal Type)	200	220	MSMD022G1U	MADHT1507
		With Brake (Vertical Type)	200	220	MSMD022G1V	MADHT1507
Delta	T	No Brake(Horizontal Type)	200	220	ECMA-C20601ES	ASD-B20221-B
		With Brake(Vertical Type)	200	220	ECMA-C20601FS	ASD-B20221-B

Motor Exposed



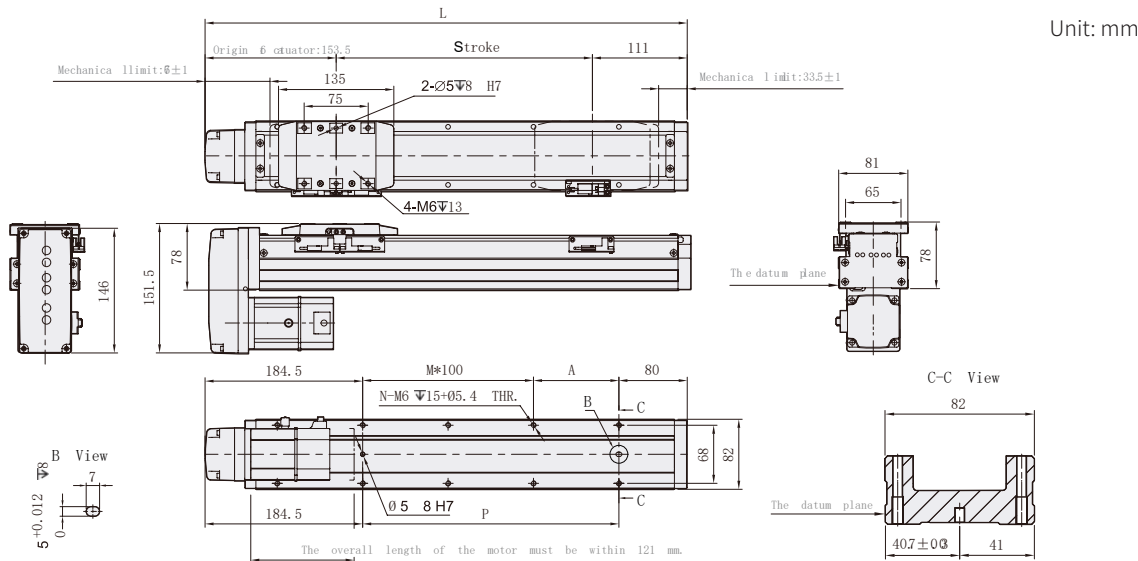
Stroke	50	100	150	200	250	300	350	400	450	500	550	600	650	700	750	800	850	900	950	1000	1050	1100
L	328	378	428	478	528	578	628	678	728	778	828	878	928	978	1028	1078	1128	1178	1228	1278	1328	1378
A	50	100	50	100	50	100	50	100	50	100	50	100	50	100	50	100	50	100	50	100	50	100
M	1	1	2	2	3	3	4	4	5	5	6	6	7	7	8	8	9	9	10	10	11	11
N	6	6	8	8	10	10	12	12	14	14	16	16	18	18	20	20	22	22	24	24	26	26
P	50	100	150	200	250	300	350	400	450	500	550	600	650	700	750	800	850	900	950	1000	1050	1100
KG	3.91	4.29	4.70	5.00	5.35	5.68	6.00	6.35	6.64	6.97	7.41	7.71	8.12	8.41	8.65	8.96	9.37	9.62	10.01	10.28	10.70	11.12

Motor Left Side



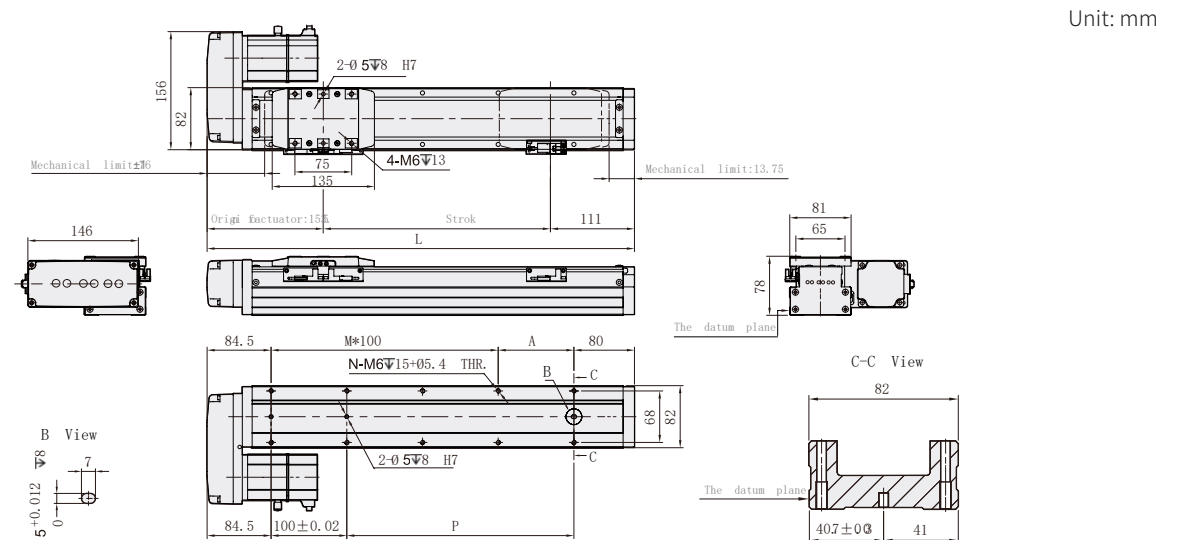
Stroke	50	100	150	200	250	300	350	400	450	500	550	600	650	700	750	800	850	900	950	1000	1050	1100
L	314.5	364.5	414.5	464.5	514.5	564.5	614.5	664.5	714.5	764.5	814.5	864.5	914.5	964.5	1014.5	1064.5	1114.5	1164.5	1214.5	1264.5	1314.5	1364.5
A	50	100	50	100	50	100	50	100	50	100	50	100	50	100	50	100	50	100	50	100	50	100
M	0	0	1	1	2	2	3	3	4	4	5	5	6	6	7	7	8	8	9	9	10	10
N	4	4	6	6	8	8	10	10	12	12	14	14	16	16	18	18	20	20	22	22	24	24
P	50	100	150	200	250	300	350	400	450	500	550	600	650	700	750	800	850	900	950	1000	1050	1100
KG	3.95	4.33	4.74	5.04	5.39	5.72	6.04	6.39	6.68	7.01	7.45	7.75	8.16	8.45	8.69	9.00	9.41	9.66	10.05	10.32	10.74	11.16

Motor Bottom Side



Stroke	50	100	150	200	250	300	350	400	450	500	550	600	650	700	750	800	850	900	950	1000	1050	1100
L	314.5	364.5	414.5	464.5	514.5	564.5	614.5	664.5	714.5	764.5	814.5	864.5	914.5	964.5	1014.5	1064.5	1114.5	1164.5	1214.5	1264.5	1314.5	1364.5
A	50	100	50	100	50	100	50	100	50	100	50	100	50	100	50	100	50	100	50	100	50	100
M	0	0	1	1	2	2	3	3	4	4	5	5	6	6	7	7	8	8	9	9	10	10
N	4	4	6	6	8	8	10	10	12	12	14	14	16	16	18	18	20	20	22	22	24	24
P	50	100	150	200	250	300	350	400	450	500	550	600	650	700	750	800	850	900	950	1000	1050	1100
KG	3.95	4.33	4.74	5.04	5.39	5.72	6.04	6.39	6.68	7.01	7.45	7.75	8.16	8.45	8.69	9.00	9.41	9.66	10.05	10.32	10.74	11.16

Motor Right Side



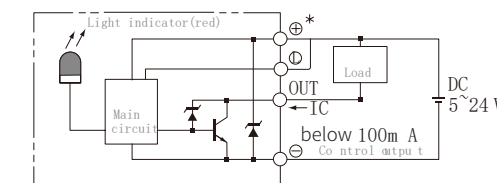
Stroke	50	100	150	200	250	300	350	400	450	500	550	600	650	700	750	800	850	900	950	1000	1050	1100
L	314.5	364.5	414.5	464.5	514.5	564.5	614.5	664.5	714.5	764.5	814.5	864.5	914.5	964.5	1014.5	1064.5	1114.5	1164.5	1214.5	1264.5	1314.5	1364.5
A	50	100	50	100	50	100	50	100	50	100	50	100	50	100	50	100	50	100	50	100	50	100
M	0	0	1	1	2	2	3	3	4	4	5	5	6	6	7	7	8	8	9	9	10	10
N	4	4	6	6	8	8	10	10	12	12	14	14	16	16	18	18	20	20	22	22	24	24
P	50	100	150	200	250	300	350	400	450	500	550	600	650	700	750	800	850	900	950	1000	1050	1100
KG	3.95	4.33	4.74	5.04	5.39	5.72	6.04	6.39	6.68	7.01	7.45	7.75	8.16	8.45	8.69	9.00	9.41	9.66	10.05	10.32	10.74	11.16



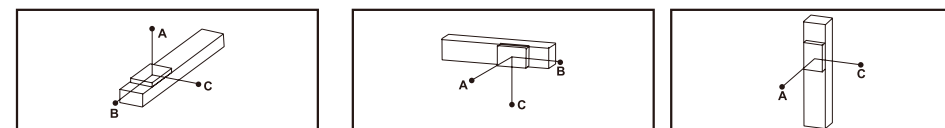
Specification

Spec	Repeatability (mm)	±0.01			
	Ball Screw Lead (mm)	5	10	20	
	Max. Speed (mm/s)	250	500	1000	
	Max. Payload	Horizontal (kg)	50	30	18
		Vertical (kg)	15	8	3
	Rated Thrust (N)	1388	694	347	
Parts	Stroke/Pitch (mm)	50-1100m/50 Pitch			
	AC Servo Motor Output (W)	400			
	Ball Screw Ø (mm)	C7φ16			
	Coupling (mm)	10x14			
	Home Sensor	Outside	EE-SX674(NPN)		

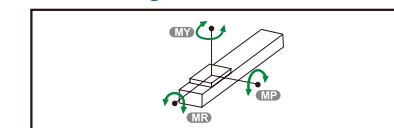
Sensor Layout



Allowable Moment



Static Loading Moment



Horizontal Installation		A	B	C	Wall Installation		A	B	C	Vertical Installation		A	C
Lead 5	20kg	1560	153	237	Lead 5	20kg	214	153	1435	Lead 5	10kg	331	331
	35kg	890	81	126		35kg	113	81	845		15kg	220	220
	50kg	550	53	82		50kg	74	53	506		-	-	-
Lead 10	10kg	1730	286	412	Lead 10	10kg	370	286	1400	Lead 10	5kg	589	589
	20kg	839	136	196		20kg	176	136	800		8kg	368	368
	30kg	541	86	124		30kg	112	86	495		-	-	-
Lead 20	6kg	1213	403	493	Lead 20	6kg	444	403	760	Lead 20	3kg	935	935
	9kg	800	264	323		9kg	292	264	277		-	-	-
	18kg	592	194	238		18kg	214	194	544		-	-	-

MY	318
MP	318
MR	626

The torque value in the chart indicate the center of gravity. Operation life is 10,000km when the product is using under the specified conditions. Data information is not for ceiling-mount inverse use. Contact us for the details if you want to apply ceiling-mount inverse usage.

Suitable Motor Brand

Brand	Mark	Brake	Walt	AC-Voltage	Motor Model	Driver Model
Mitsubishi	M	No Brake (Horizontal Type)	400	220	HG-KR43	MR-J4-40A
		With Brake (Vertical Type)	400	220	HG-KR43B	MR-J4-40A
Panasonic	P	No Brake (Horizontal Type)	400	220	MSMD042G1U	MADHT2510
		With Brake (Vertical Type)	400	220	MSMD042G1V	MADHT2510
Delta	T	No Brake(Horizontal Type)	400	220	ECMA-C20604ES	ASD-B20421-B
		With Brake(Vertical Type)	400	220	ECMA-C20604FS	ASD-B20421-B

Max. Stroke	1100mm	Max. Speed	1000mm/s	Motor Output	400W	Ball Screw	φ16mm
-------------	--------	------------	----------	--------------	------	------------	-------

GTHA8 - L10 - 100 - BC - M40B - C4 - 0001

Model **Stroke** **Customization Order No.**

50-1100mm
50mm Pitch

Ball Screw Lead

2	2mm
5	5mm
10	10mm
20	20mm

Motor Position

BC	Motor Exposed
BM	Motor Bottom Side
BL	Motor Left Side
BR	Motor Right Side

Motor Brand、Power Output

M	Mitsubishi	05	-	B
P	Panasonic	10	100W	
Y	Yaskawa	20	-	
T	Delta	40	-	

If No Brake, No Description

Home Sensor

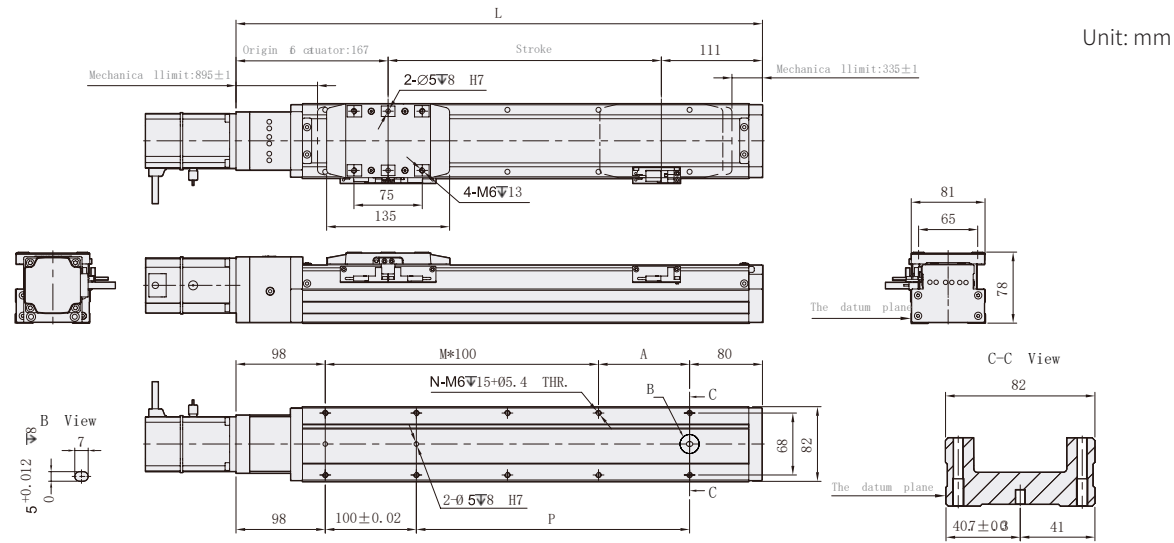
Outside	
C	Motor Side
D	Opposite Motor Side
NO SENSOR	
E	No Sensor

When the stroke is 50mm, the sensor installation has the following restrictions:
1. Home sensor and limit sensor has to installed on the different side or body.
2. Both Sides of slider need to install the sensor trigger device.

Limit Sensor

Outside	
3	1 P c
4	2 P c
NO SENSOR	
5	No Sensor

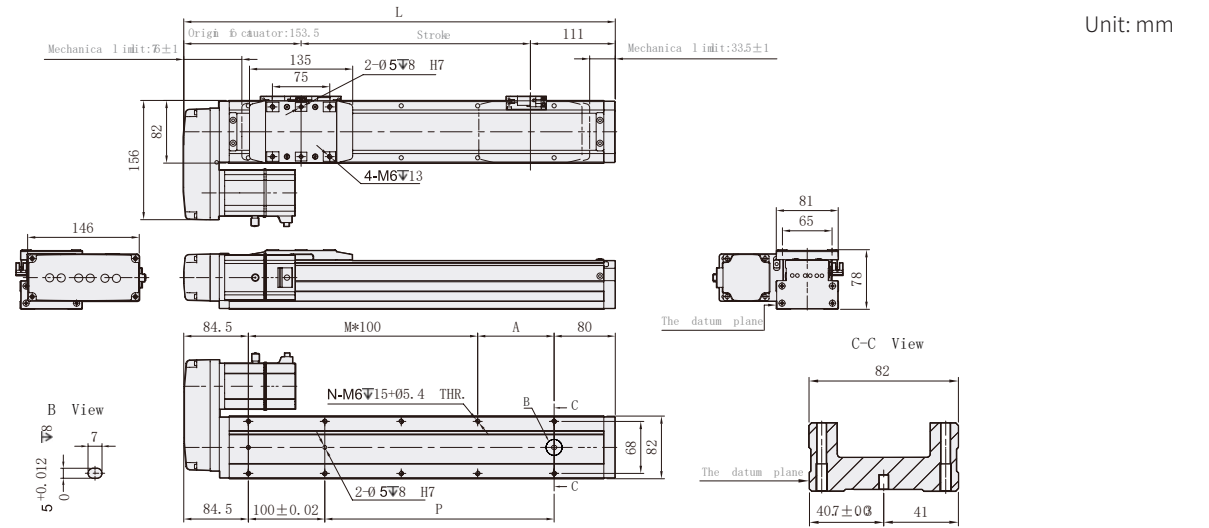
Motor Exposed



Unit: mm

Stroke	50	100	150	200	250	300	350	400	450	500	550	600	650	700	750	800	850	900	950	1000	1050	1100
L	328	378	428	478	528	578	628	678	728	778	828	878	928	978	1028	1078	1128	1178	1228	1278	1328	1378
A	50	100	50	100	50	100	50	100	50	100	50	100	50	100	50	100	50	100	50	100	50	100
M	1	1	2	2	3	3	4	4	5	5	6	6	7	7	8	8	9	9	10	10	11	11
N	6	6	8	8	10	10	12	12	14	14	16	16	18	18	20	20	22	22	24	24	26	26
P	50	100	150	200	250	300	350	400	450	500	550	600	650	700	750	800	850	900	950	1000	1050	1100
KG	3.91	4.29	4.70	5.00	5.35	5.68	6.00	6.35	6.64	6.97	7.41	7.71	8.12	8.41	8.65	8.96	9.37	9.62	10.01	10.28	10.70	11.12

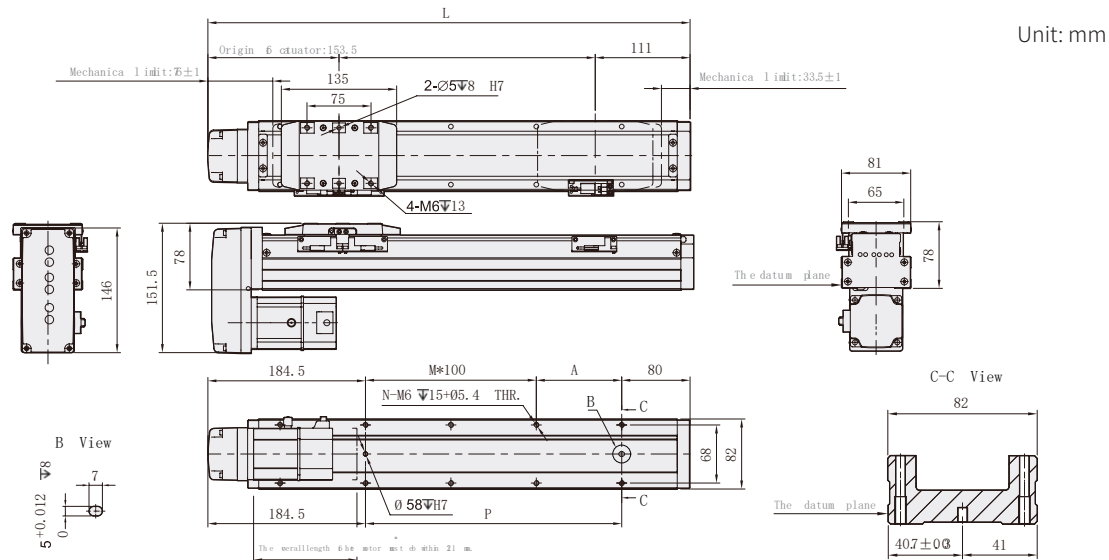
Motor Left Side



Unit: mm

Stroke	50	100	150	200	250	300	350	400	450	500	550	600	650	700	750	800	850	900	950	1000	1050	1100
L	314.5	364.5	414.5	464.5	514.5	564.5	614.5	664.5	714.5	764.5	814.5	864.5	914.5	964.5	1014.5	1064.5	1114.5	1164.5	1214.5	1264.5	1314.5	1364.5
A	50	100	50	100	50	100	50	100	50	100	50	100	50	100	50	100	50	100	50	100	50	100
M	0	0	1	1	2	2	3	3	4	4	5	5	6	6	7	7	8	8	9	9	10	10
N	4	4	6	6	8	8	10	10	12	12	14	14	16	16	18	18	20	20	22	22	24	24
P	50	100	150	200	250	300	350	400	450	500	550	600	650	700	750	800	850	900	950	1000	1050	1100
KG	3.95	4.33	4.74	5.04	5.39	5.72	6.04	6.39	6.68	7.01	7.45	7.75	8.16	8.45	8.69	9.00	9.41	9.66	10.05	10.32	10.74	11.16

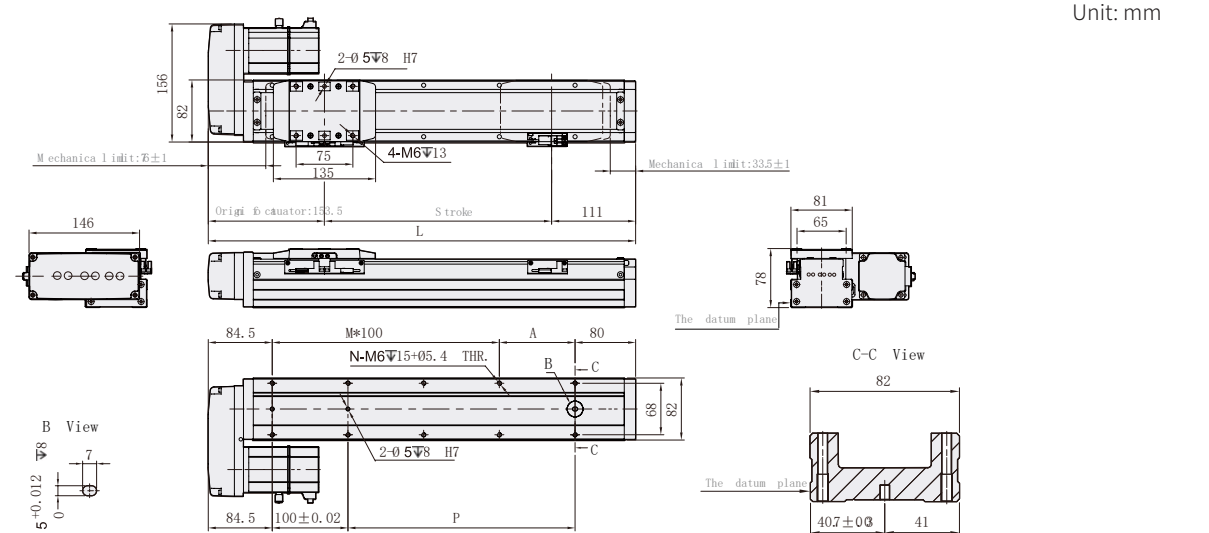
Motor Bottom Side



Unit: mm

Stroke	50	100	150	200	250	300	350	400	450	500	550	600	650	700	750	800	850	900	950	1000	1050	1100
L	314.5	364.5	414.5	464.5	514.5	564.5	614.5	664.5	714.5	764.5	814.5	864.5	914.5	964.5	1014.5	1064.5	1114.5	1164.5	1214.5	1264.5	1314.5	1364.5
A	50	100	50	100	50	100	50	100	50	100	50	100	50	100	50	100	50	100	50	100	50	100
M	0	0	1	1	2	2	3	3	4	4	5	5	6	6	7	7	8	8	9	9	10	10
N	4	4	6	6	8	8	10	10	12	12	14	14	16	16	18	18	20	20	22	22	24	24
P	50	100	150	200	250	300	350	400	450	500	550	600	650	700	750	800	850	900	950	1000	1050	1100
KG	3.95	4.33	4.74	5.04	5.39	5.72	6.04	6.39	6.68	7.01	7.45	7.75	8.16	8.45	8.69	9.00	9.41	9.66	10.05	10.32	10.74	11.16

Motor Right Side



Unit: mm

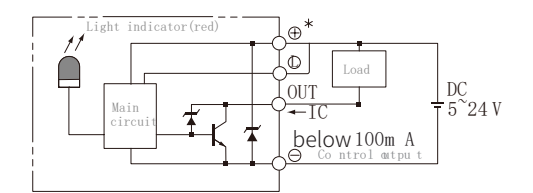
Stroke	50	100	150	200	250	300	350	400	450	500	550	600	650	700	750	800	850	900	950	1000	1050	1100
L	314.5	364.5	414.5	464.5	514.5	564.5	614.5	664.5	714.5	764.5	814.5	864.5	914.5	964.5	1014.5	1064.5	1114.5	1164.5	1214.5	1264.5	1314.5	1364.5
A	50	100	50	100	50	100	50	100	50	100	50	100	50	100	50	100	50	100	50	100	50	100
M	0	0	1	1	2	2	3	3	4	4	5	5	6	6	7	7	8	8	9	9	10	10
N	4	4	6	6	8	8	10	10	12	12	14	14	16	16	18	18	20	20	22	22	24	24
P	50	100	150	200	250	300	350	400	450	500	550	600	650	700	750	800	850	900	950	1000	1050	1100
KG	3.95	4.33	4.74	5.04	5.39	5.72	6.04	6.39	6.68	7.01	7.45	7.75	8.16	8.45	8.69	9.00	9.41	9.66	10.05	10.32	10.74	11.16



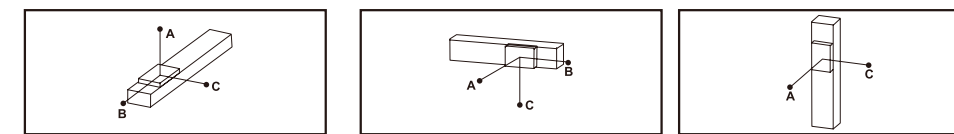
Specification

Spec	Repeatability (mm)	±0.01				
	Ball Screw Lead (mm)	5	10	20	32	
	Max. Speed (mm/s)	250	500	1000	1600	
	Max. Payload	Horizontal (kg)	110	88	40	30
		Vertical (kg)	33	22	10	8
	Rated Thrust (N)	1388	694	347	218	
	Stroke/Pitch (mm)	50-1250m/50 Pitch				
Parts	AC Servo Motor Output (W)	400				
	Ball Screw Ø (mm)	C7φ16				
	Coupling (mm)	10x14				
	Home Sensor	Outside	EE-SX674(NPN)			

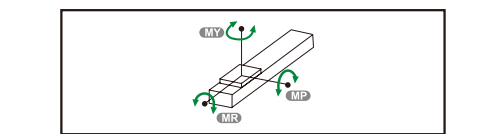
Sensor Layout



Allowable Moment



Static Loading Moment



Horizontal Installation		A	B	C	Wall Installation		A	B	C	Vertical Installation		A	C
Lead 5	60kg	2850	250	340	Lead 5	55kg	280	280	3300	Lead 5	15kg	1200	1200
	80kg	2100	180	250		75kg	200	195	2400		22kg	820	820
	110kg	1500	120	170		110kg	130	125	1550		33kg	550	550
Lead 10	30kg	2850	490	600	Lead 10	35kg	400	410	2500	Lead 10	10kg	1600	1600
	50kg	1700	280	350		55kg	245	250	1550		14kg	1150	1150
	88kg	950	140	190		88kg	150	150	950		22kg	730	760
Lead 20	10kg	3400	1250	1400	Lead 20	12kg	900	1070	3000	Lead 20	7kg	1800	1800
	22kg	1650	550	620		20kg	550	630	1800		10kg	1250	1250
	40kg	900	290	330		40kg	260	300	900		-	-	-
Lead 32	15kg	1100	570	550	Lead 32	15kg	440	570	1050	Lead 32	5kg	1600	1600
	25kg	620	330	320		30kg	210	270	520		8kg	1000	1000
	30kg	520	270	260		-	-	-	-		-	-	-

MY	1168
MP	606
MR	606

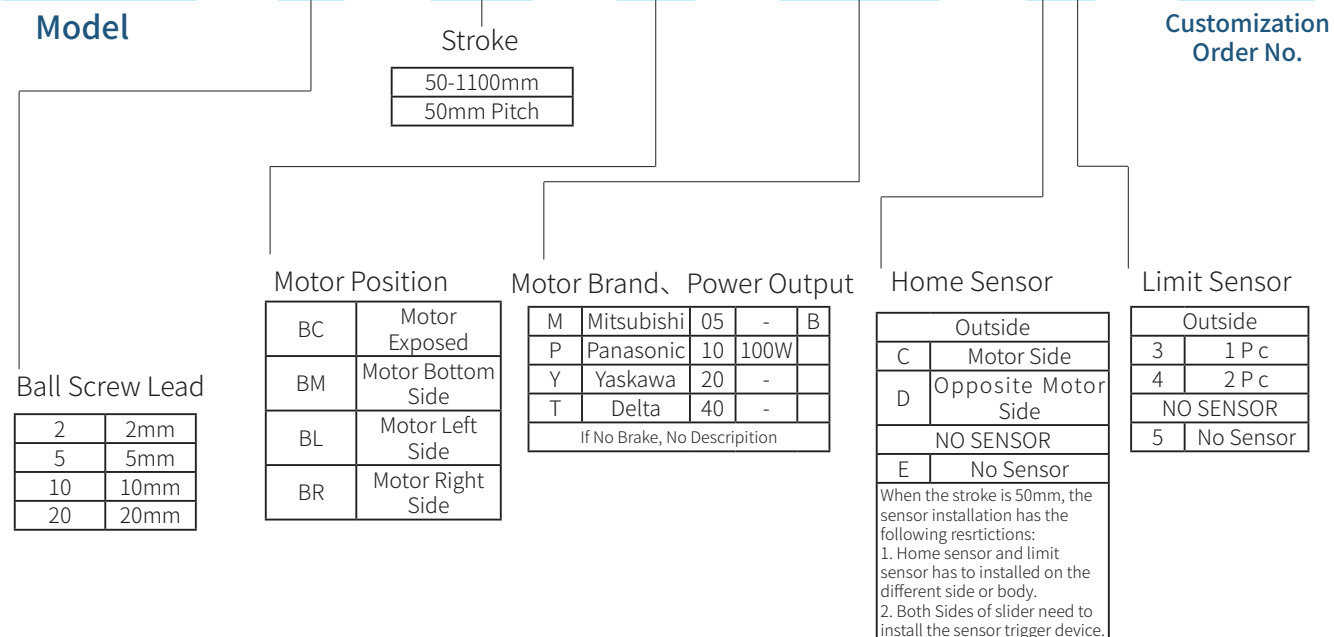
The torque value in the chart indicate the center of gravity. Operation life is 10,000km when the product is using under the specified conditions. Data information is not for ceiling-mount inverse use. Contact us for the details if you want to apply ceiling-mount inverse usage.

Suitable Motor Brand

Brand	Mark	Brake	Walt	AC-Voltage	Motor Model	Driver Model
Mitsubishi	M	No Brake (Horizontal Type)	400	220	HG-KR43	MR-J4-40A
		With Brake (Vertical Type)	400	220	HG-KR43B	MR-J4-40A
Panasonic	P	No Brake (Horizontal Type)	400	220	MSMD042G1U	MADHT2510
		With Brake (Vertical Type)	400	220	MSMD042G1V	MADHT2510
Delta	T	No Brake(Horizontal Type)	400	220	ECMA-C20604ES	ASD-B20421-B
		With Brake(Vertical Type)	400	220	ECMA-C20604FS	ASD-B20421-B

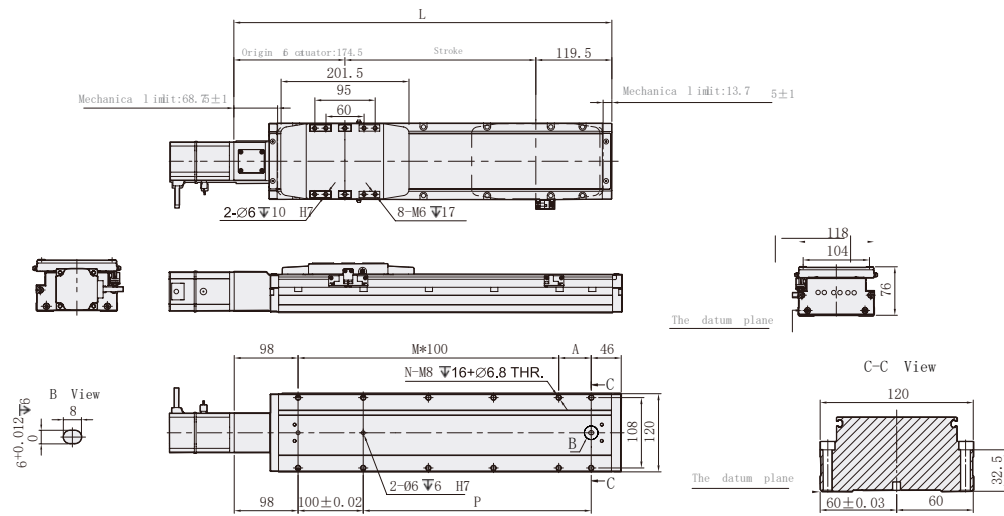
Max. Stroke	1250mm	Max. Speed	1600mm/s	Motor Output	400W	Ball Screw	φ16mm
-------------	--------	------------	----------	--------------	------	------------	-------

GTHA12 - L5 - 100 - BC - M40B - C4 - 0001



Motor Exposed

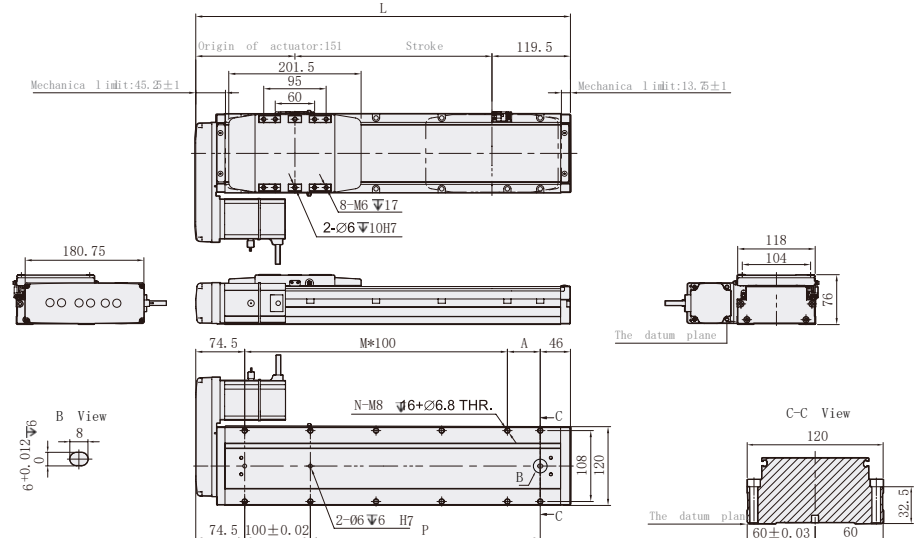
Unit: mm



Stroke	50	100	150	200	250	300	350	400	450	500	550	600	650	700	750	800	850	900	950	1000	1050	1100	1150	1200	1250
L	344	394	444	494	544	594	644	694	744	794	844	894	944	994	1044	1094	1144	1194	1244	1294	1344	1394	1444	1494	1544
A	100	50	100	50	100	50	100	50	100	50	100	50	100	50	100	50	100	50	100	50	100	50	100	50	100
M	1	2	2	3	3	4	4	5	5	6	6	7	7	8	8	9	9	10	10	11	11	12	12	13	13
N	6	8	8	10	10	12	12	14	14	16	16	18	18	20	20	22	22	24	24	26	26	28	28	30	30
P	100	150	200	250	300	350	400	450	500	550	600	650	700	750	800	850	900	950	1000	1050	1100	1150	1200	1250	1300
KG	5.05	5.4	5.75	6.1	6.45	6.8	7.15	7.5	7.85	8.2	8.55	8.9	9.25	9.6	9.95	10.3	10.65	11	11.35	11.7	12.05	12.4	12.75	13.1	13.45

Motor Left Side

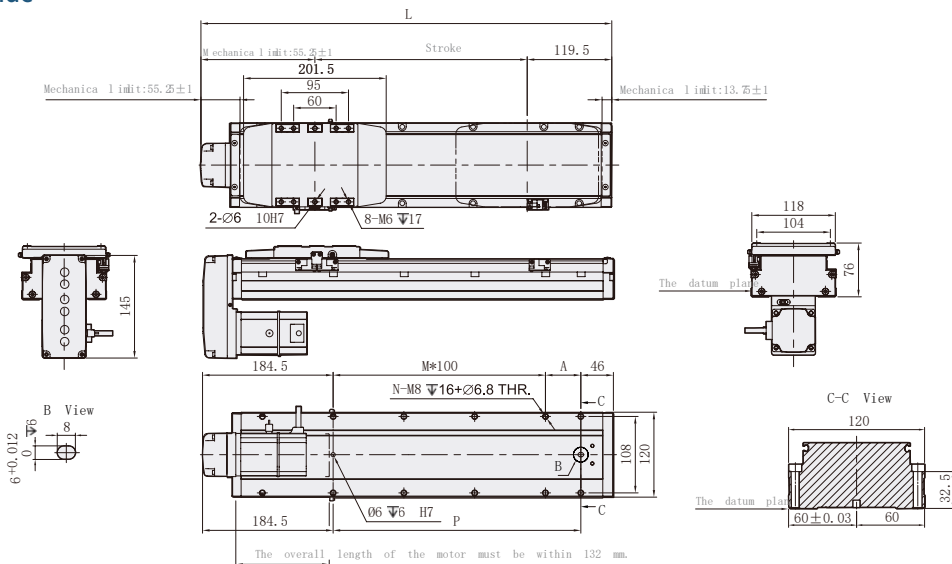
Unit: mm



Stroke	50	100	150	200	250	300	350	400	450	500	550	600	650	700	750	800	850	900	950	1000	1050	1100	1150	1200	1250
L	330.5	380.5	430.5	480.5	530.5	580.5	630.5	680.5	730.5	780.5	830.5	880.5	930.5	980.5	1030.5	1080.5	1130.5	1180.5	1230.5	1280.5	1330.5	1380.5	1430.5	1480.5	1530.5
A	100	50	100	50	100	50	100	50	100	50	100	50	100	50	100	50	100	50	100	50	100	50	100	50	100
M	0	1	1	2	2	3	3	4	4	5	5	6	6	7	7	8	8	9	9	10	10	11	11	12	12
N	4	6	6	8	8	10	10	12	12	14	14	16	16	18	18	20	20	22	22	24	24	26	26	28	28
P	100	150	200	250	300	350	400	450	500	550	600	650	700	750	800	850	900	1000	1050	1100	1150	1200	1250	1300	1350
KG	5.21	5.56	5.91	6.26	6.61	6.96	7.31	7.66	8.01	8.36	8.71	9.06	9.41	9.76	10.11	10.46	10.81	11.16	11.51	11.86	12.21	12.56	12.91	13.26	13.61

Motor Bottom Side

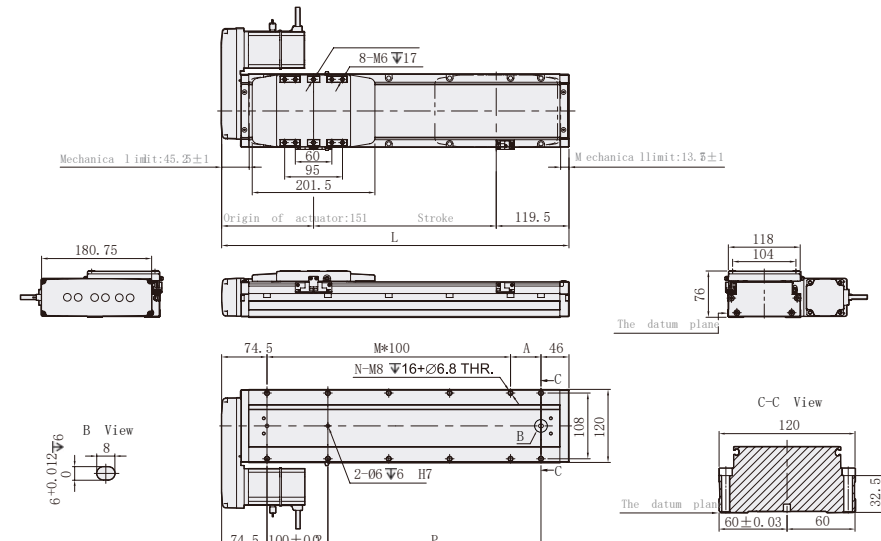
Unit: mm



Stroke	50	100	150	200	250	300	350	400	450	500	550	600	650	700	750	800	850	900	950	1000	1050	1100	1150	1200	1250
L	330.5	380.5	430.5	480.5	530.5	580.5	630.5	680.5	730.5	780.5	830.5	880.5	930.5	980.5	1030.5	1080.5	1130.5	1180.5	1230.5	1280.5	1330.5	1380.5	1430.5	1480.5	1530.5
A	100	50	100	50	100	50	100	50	100	50	100	50	100	50	100	50	100	50	100	50	100	50	100	50	100
M	0	1	1	2	2	3	3	4	4	5	5	6	6	7	7	8	8	9	9	10	10	11	11	12	12
N	4	6	6	8	8	10	10	12	12	14	14	16	16	18	18	20	20	22	22	24	24	26	26	28	28
P	100	150	200	250	300	350	400	450	500	550	600	650	700	750	800	850	900	1000	1050	1100	1150	1200	1250	1300	1350
KG	5.21	5.56	5.91	6.26	6.61	6.96	7.31	7.66	8.01	8.36	8.71	9.06	9.41	9.76	10.11	10.46	10.81	11.16	11.51	11.86	12.21	12.56	12.91	13.26	13.61

Motor Right Side

Unit: mm



Stroke	50	100	150	200	250	300	350	400	450	500	550	600	650	700	750	800	850	900	950	1000	1050	1100	1150	1200	1250
L	330.5	380.5	430.5	480.5	530.5	580.5	630.5	680.5	730.5	780.5	830.5	880.5	930.5	980.5	1030.5	1080.5	1130.5	1180.5	1230.5	1280.5	1330.5	1380.5	1430.5	1480.5	1530.5
A	100	50	100	50	100	50	100	50	100	50	100	50	100	50	100	50	100	50	100	50	100	50	100	50	100
M	0	1	1	2	2	3	3	4	4	5	5	6	6	7	7	8	8	9	9	10	10	11	11	12	12
N	4	6	6	8	8	10	10	12	12	14	14	16	16	18	18	20	20	22	22	24	24	26	26	28	28
P	100	150	200	250	300	350	400	450	500	550	600	650	700	750	800	850	900	1000	1050	1100	1150	1200	1250	1300	1350
KG	5.21	5.56	5.91	6.26	6.61	6.96	7.31	7.66	8.01	8.36	8.71	9.06	9.41	9.76	10.11	10.46	10.81	11.16	11.51	11.86	12.21	12.56	12.91	13.26	13.61



Max. Stroke	1250mm	Max. Speed	1600mm/s	Motor Output	100W	Ball Screw	φ16mm
-------------	--------	------------	----------	--------------	------	------------	-------

GTHA5S - L2 - 100 - BC - M10B - C4 - 0001

Model | Stroke: 25-325mm / 25mm Pitch | Customization Order No.

Ball Screw Lead

2	2mm
5	5mm
10	10mm
20	20mm

Motor Position

BC	Motor Exposed
BM	Motor Bottom Side
BL	Motor Left Side
BR	Motor Right Side

Motor Brand、Power Output

M	Mitsubishi	05	-	B
P	Panasonic	10	100W	
Y	Yaskawa	20	-	
T	Delta	40	-	
If No Brake, No Description				

Home Sensor

Outside	
C	Motor Side
D	Opposite Motor Side
NO SENSOR	
E	No Sensor

Limit Sensor

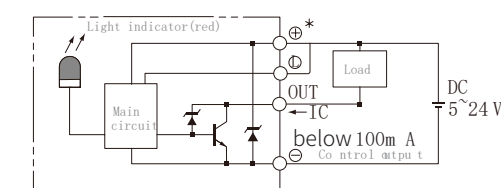
Outside	
3	1 P c
4	2 P c
NO SENSOR	
5	No Sensor

When the stroke is 50mm, the sensor installation has the following restrictions:
1. Home sensor and limit sensor has to installed on the different side or body.
2. Both Sides of slider need to install the sensor trigger device.

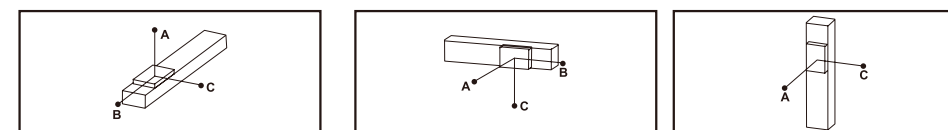
Specification

Spec	Repeatability (mm)	±0.01	
	Ball Screw Lead (mm)	2	
	Max. Speed (mm/s)	100	
	Max. Payload	Horizontal (kg)	30 (Daul carriage)
		Vertical (kg)	10 (Daul carriage)
	Rated Thrust (N)	854	
Stroke/Pitch (mm)	25-325m/25 Pitch		
Parts	AC Servo Motor Ouput (W)	100	
	Ball Screw Ø (mm)	C7φ16	
	Coupling (mm)	10x14	
	Home Sensor	Outside	EE-SX674(NPN)

Sensor Layout



Allowable Moment

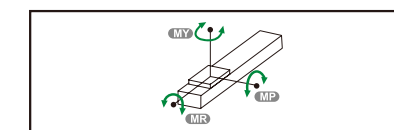


Horizontal Installation		A	B	C
Lead 5	10kg	900	100	135
	20kg	700	45	60
	30kg	550	25	35

Wall Installation		A	B	C
Lead 5	10kg	135	100	900
	20kg	60	45	700
	30kg	37	27	550

Vertical Installation		A	C
Lead 5	6kg	180	180
	8kg	135	135
	10kg	110	110

Static Loading Moment



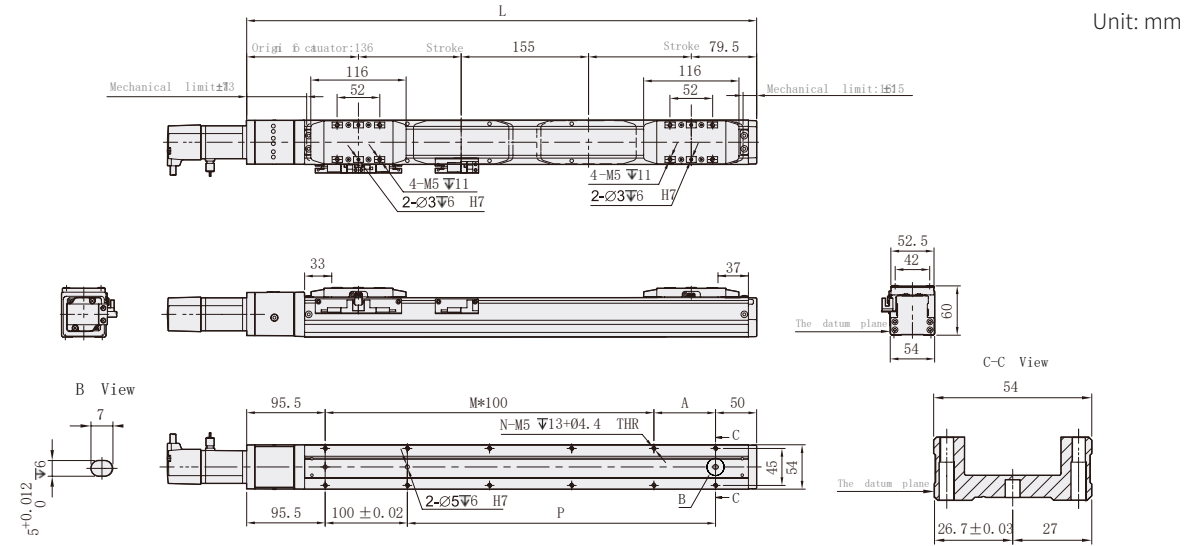
MY	103
MP	103
MR	144

The torque value in the chart indicate the center of gravity. Operation life is 10,000km when the product is using under the specified conditions. Data information is not for ceiling-mount inverse use. Contact us for the details if you want to apply ceiling-mount inverse usage.

Suitable Motor Brand

Brand	Mark	Brake	Walt	AC-Voltage	Motor Model	Driver Model
Mitsubishi	M	No Brake (Horizontal Type)	100	220	HG-KR13	MR-J4-10A
		With Brake (Vertical Type)	100	220	HG-KR13B	MR-J4-10A
Panasonic	P	No Brake (Horizontal Type)	100	220	MSMD012G1U	MADHT1505
		With Brake (Vertical Type)	100	220	MSMD012G1V	MADHT1505
Delta	T	No Brake(Horizontal Type)	100	220	ECMA-C20401ES	ASD-B20121-B
		With Brake(Vertical Type)	100	220	ECMA-C20401FS	ASD-B20121-B

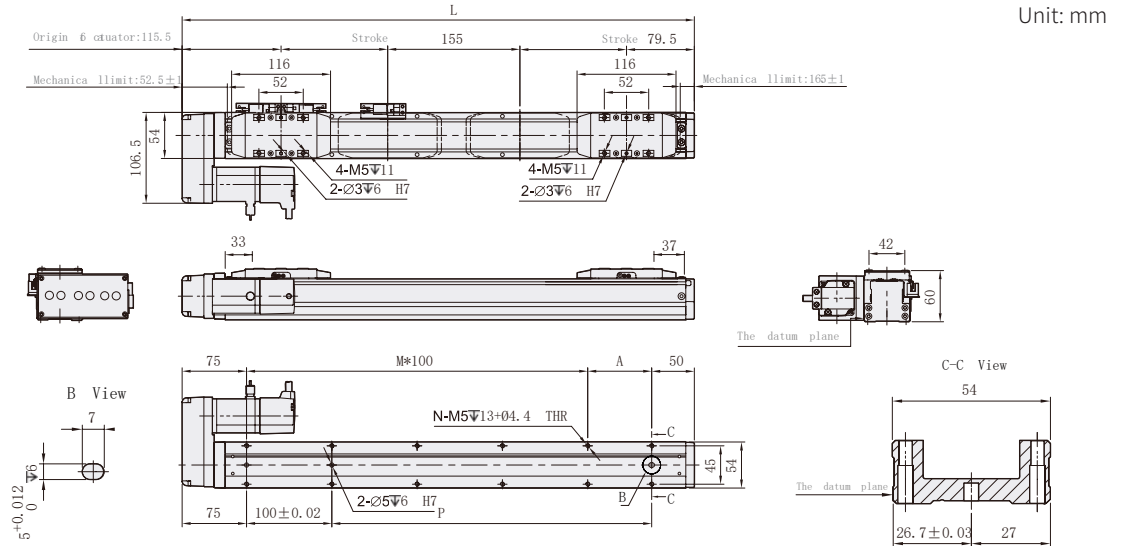
Motor Exposed



Unit: mm

Stroke	25	50	75	100	125	150	175	200	225	250	275	300	325
L	420.5	470.5	520.5	570.5	620.5	670.5	720.5	770.5	820.5	870.5	920.5	970.5	1020.5
A	75	25	75	25	75	25	75	25	75	25	75	25	75
M	2	3	3	4	4	5	5	6	6	7	7	8	8
N	8	10	10	12	12	14	14	16	16	18	18	20	20
P	175	225	275	325	375	425	475	525	575	625	675	725	775
KG	2.82	3.01	3.21	3.41	3.6	3.8	4	4.19	4.39	4.59	4.78	4.98	5.18

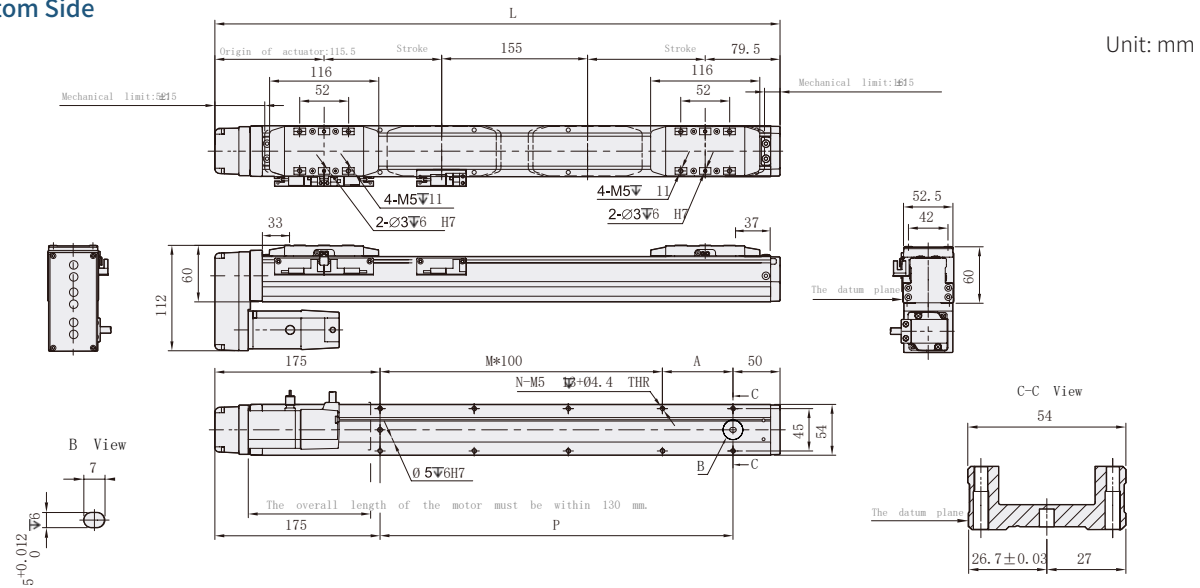
Motor Left Side



Unit: mm

Stroke	25	50	75	100	125	150	175	200	225	250	275	300	325
L	400	450	500	550	600	650	700	750	800	850	900	950	1000
A	75	25	75	25	75	25	75	25	75	25	75	25	75
M	1	2	2	3	3	4	4	5	5	6	6	7	7
N	6	8	8	10	10	12	12	14	14	16	16	18	18
P	175	225	275	325	375	425	475	525	575	625	675	725	775
KG	2.99	3.18	3.38	3.58	3.77	3.97	4.17	4.36	4.56	4.76	4.95	5.15	5.35

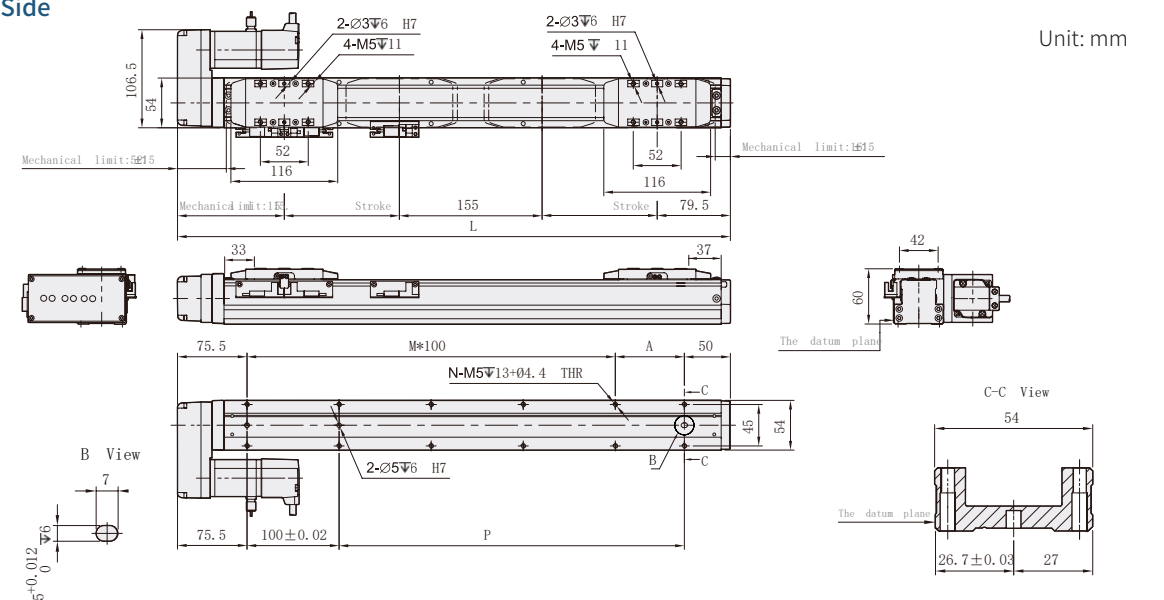
Motor Bottom Side



Unit: mm

Stroke	25	50	75	100	125	150	175	200	225	250	275	300	325
L	400	450	500	550	600	650	700	750	800	850	900	950	1000
A	75	25	75	25	75	25	75	25	75	25	75	25	75
M	1	2	2	3	3	4	4	5	5	6	6	7	7
N	6	8	8	10	10	12	12	14	14	16	16	18	18
P	175	225	275	325	375	425	475	525	575	625	675	725	775
KG	2.99	3.18	3.38	3.58	3.77	3.97	4.17	4.36	4.56	4.76	4.95	5.15	5.35

Motor Right Side



Unit: mm

Stroke	25	50	75	100	125	150	175	200	225	250	275	300	325
L	400	450	500	550	600	650	700	750	800	850	900	950	1000
A	75	25	75	25	75	25	75	25	75	25	75	25	75
M	1	2	2	3	3	4	4	5	5	6	6	7	7
N	6	8	8	10	10	12	12	14	14	16	16	18	18
P	175	225	275	325	375	425	475	525	575	625	675	725	775
KG	2.99	3.18	3.38	3.58	3.77	3.97	4.17	4.36	4.56	4.76	4.95	5.15	5.35



Max. Stroke	450mm	Max. Speed	250mm/s	Motor Output	200W	Ball Screw	φ16mm
-------------	-------	------------	---------	--------------	------	------------	-------

GTHA8S - L5 - 100 - BC - M20B - C4 - 0001

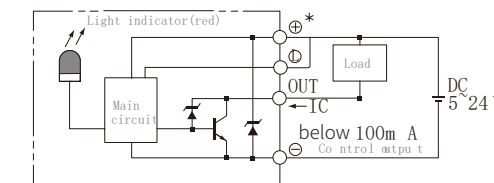
Model	Stroke	Motor Position	Motor Brand、Power Output	Home Sensor	Limit Sensor	Customization Order No.
	25-450mm 25mm Pitch	BC Motor Exposed BM Motor Bottom Side BL Motor Left Side BR Motor Right Side	M Mitsubishi 05 - B P Panasonic 10 200W Y Yaskawa 20 - T Delta 40 -	Outside C Motor Side D Opposite Motor Side NO SENSOR E No Sensor	Outside 3 1 P c 4 2 P c NO SENSOR 5 No Sensor	

When the stroke is 50mm, the sensor installation has the following restrictions:
1. Home sensor and limit sensor has to installed on the different side or body.
2. Both Sides of slider need to install the sensor trigger device.

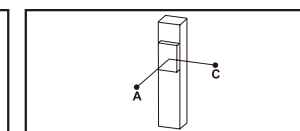
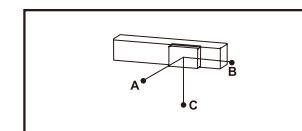
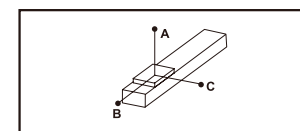
Specification

Spec	Repeatability (mm)	±0.01	
	Ball Screw Lead (mm)	5	
	Max. Speed (mm/s)	250	
	Max. Payload	Horizontal (kg)	50 (Dual carriage)
		Vertical (kg)	15 (Dual carriage)
	Rated Thrust (N)	683	
Parts	Stroke/Pitch (mm)	25-450m/25 mm Pitch	
	AC Servo Motor Ouput (W)	200	
	Ball Screw Ø (mm)	C7φ16	
	Coupling (mm)	10x14/11	
Home Sensor	Outside	EE-SX674(NPN)	

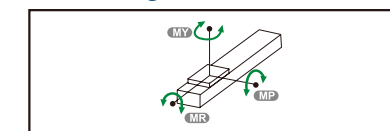
Sensor Layout



Allowable Moment



Static Loading Moment



Horizontal Installation	A	B	C	
	20kg	1560	153	237
	35kg	890	81	126
50kg	550	53	82	

Wall Installation	A	B	C	
	20kg	214	153	1435
	35kg	113	81	845
50kg	74	53	506	

Vertical Installation	A	C	
	10kg	331	331
	15kg	220	220
-	-	-	

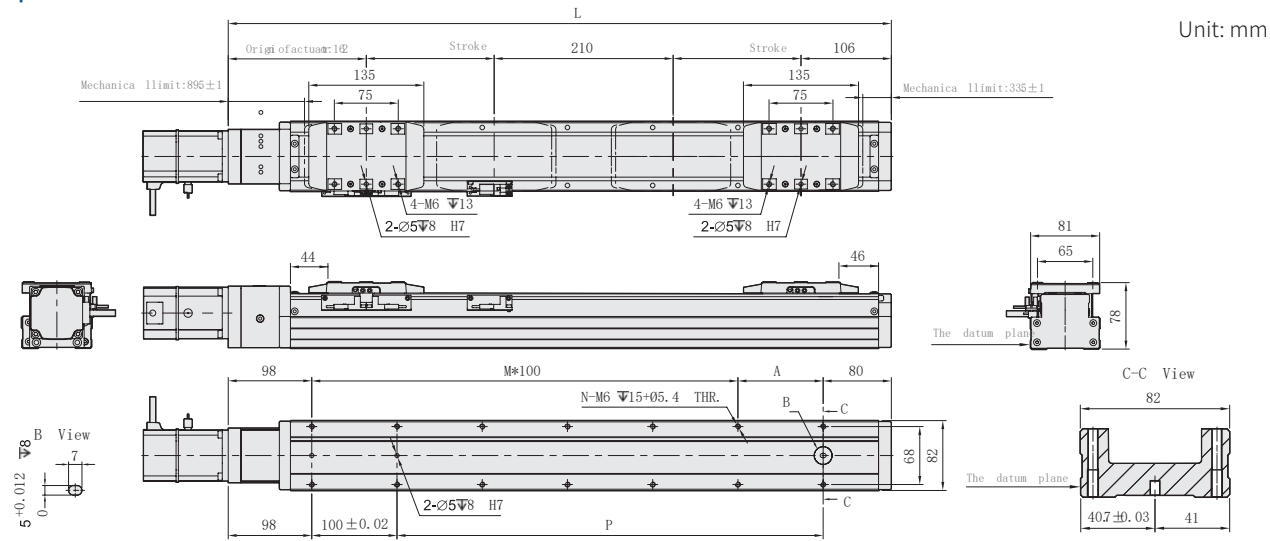
MY	318
MP	318
MR	626

The torque value in the chart indicate the center of gravity. Operation life is 10,000km when the product is using under the specified conditions. Data information is not for ceiling-mount inverse use. Contact us for the details if you want to apply ceiling-mount inverse usage.

Suitable Motor Brand

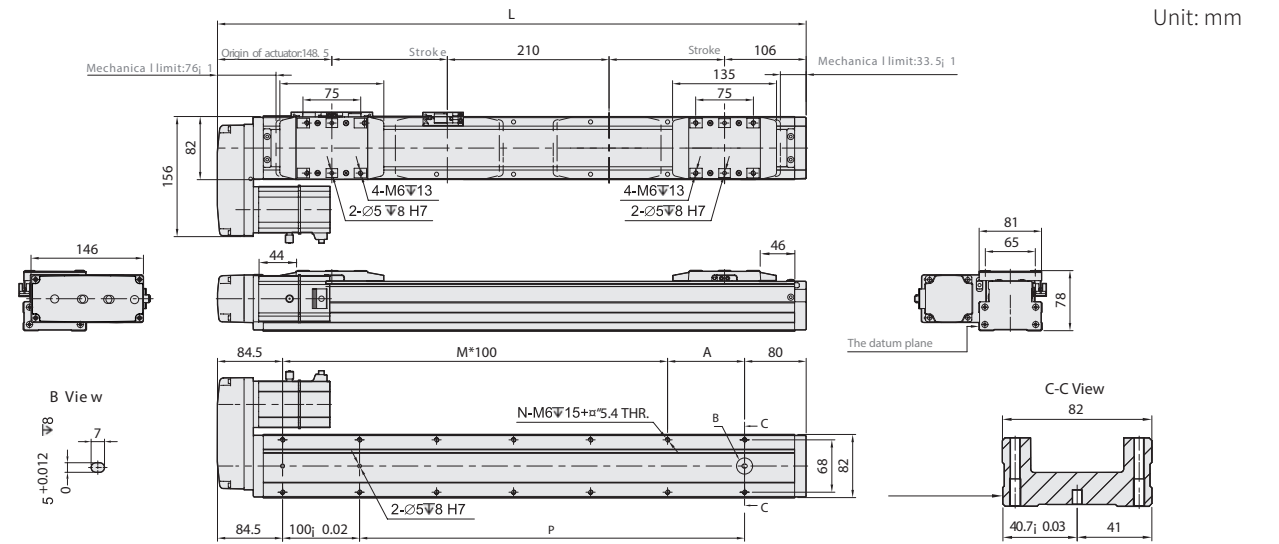
Brand	Mark	Brake	Walt	AC-Voltage	Motor Model	Driver Model
Mitsubishi	M	No Brake (Horizontal Type)	200	220	HG-KR23	MR-J4-20A
		With Brake (Vertical Type)	200	220	HG-KR23B	MR-J4-20A
Panasonic	P	No Brake (Horizontal Type)	200	220	MSMD022G1U	MADHT1507
		With Brake (Vertical Type)	200	220	MSMD022G1V	MADHT1507
Delta	T	No Brake(Horizontal Type)	200	220	ECMA-C20602ES	ASD-B20221-B
		With Brake(Vertical Type)	200	220	ECMA-C20602FS	ASD-B20221-B

Motor Exposed



Unit: mm

Motor Left Side

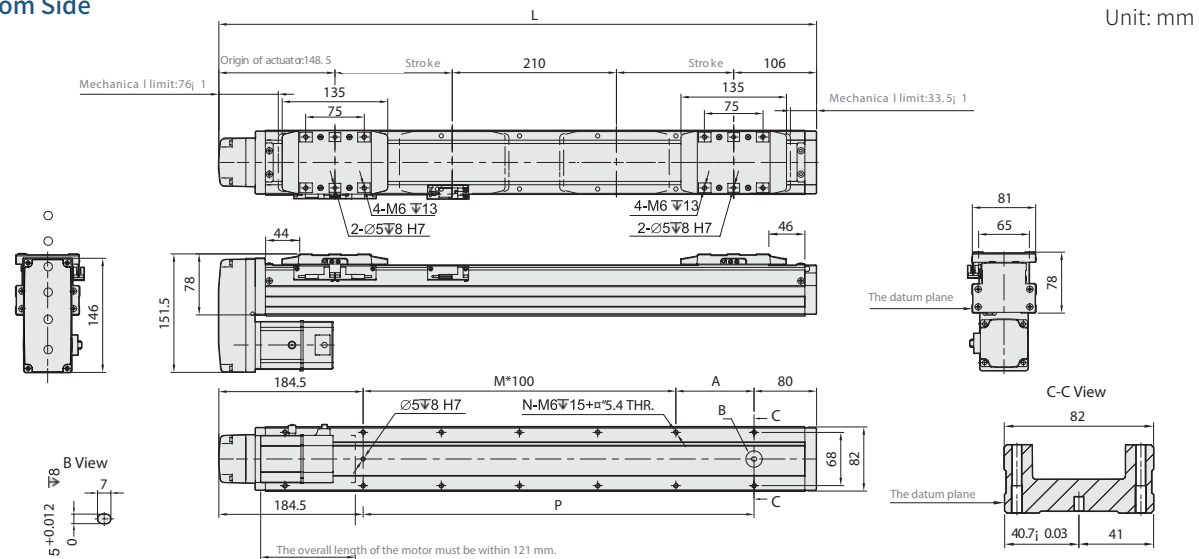


Unit: mm

Stroke	25	50	75	100	125	150	175	200	225	250	275	300	325	350	375	400	425
L	528	578	628	678	728	778	828	878	928	978	1028	1078	1128	1178	1228	1278	1328
A	50	100	50	100	50	100	50	100	50	100	50	100	50	100	50	100	50
M	3	3	4	4	5	5	6	6	7	7	8	8	9	9	10	10	11
N	10	10	12	12	14	14	16	16	18	18	20	20	22	22	24	24	26
P	250	300	350	400	450	500	550	600	650	700	750	800	850	900	950	1000	1050
KG	6.64	7.00	7.37	7.73	8.10	8.46	8.83	9.19	9.56	9.92	10.29	10.65	11.02	11.38	11.75	12.11	12.48

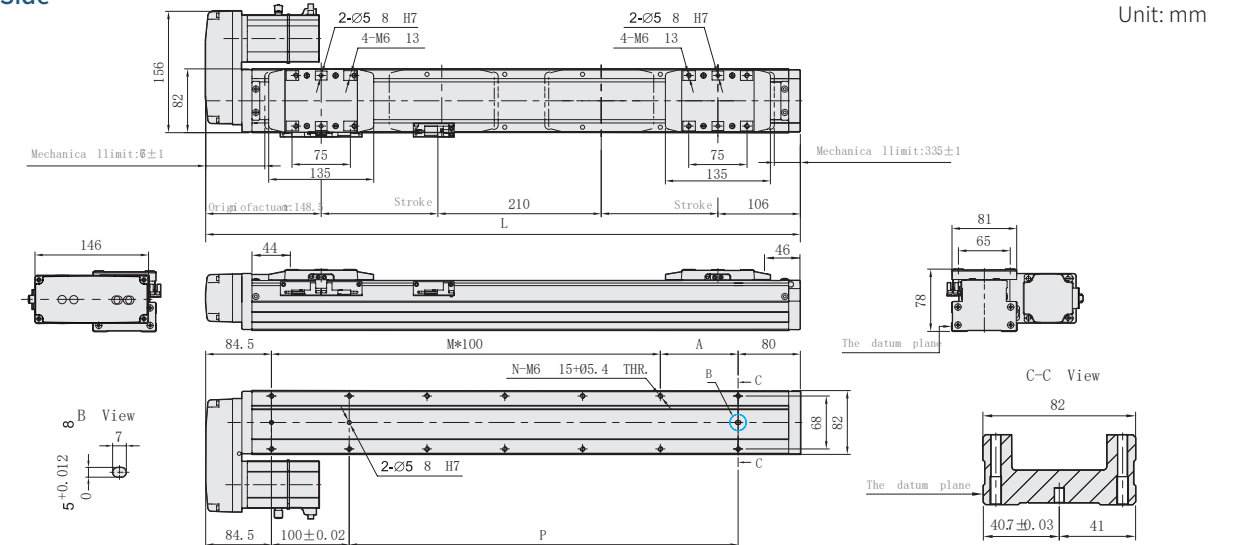
Stroke	25	50	75	100	125	150	175	200	225	250	275	300	325	350	375	400	425
L	514.5	564.5	614.5	664.5	714.5	764.5	814.5	864.5	914.5	964.5	1014.5	1064.5	1114.5	1164.5	1214.5	1264.5	1314.5
A	50	100	50	100	50	100	50	100	50	100	50	100	50	100	50	100	50
M	2	2	3	3	4	4	5	5	6	6	7	7	8	8	9	9	10
N	8	8	10	10	12	12	14	14	16	16	18	18	20	20	22	22	24
P	250	300	350	400	450	500	550	600	650	700	750	800	850	900	950	1000	1050
KG	7.16	7.68	8.2	8.72	9.24	9.76	10.28	10.8	11.32	11.84	12.36	12.88	13.4	13.92	14.44	14.96	15.48

Motor Bottom Side



Unit: mm

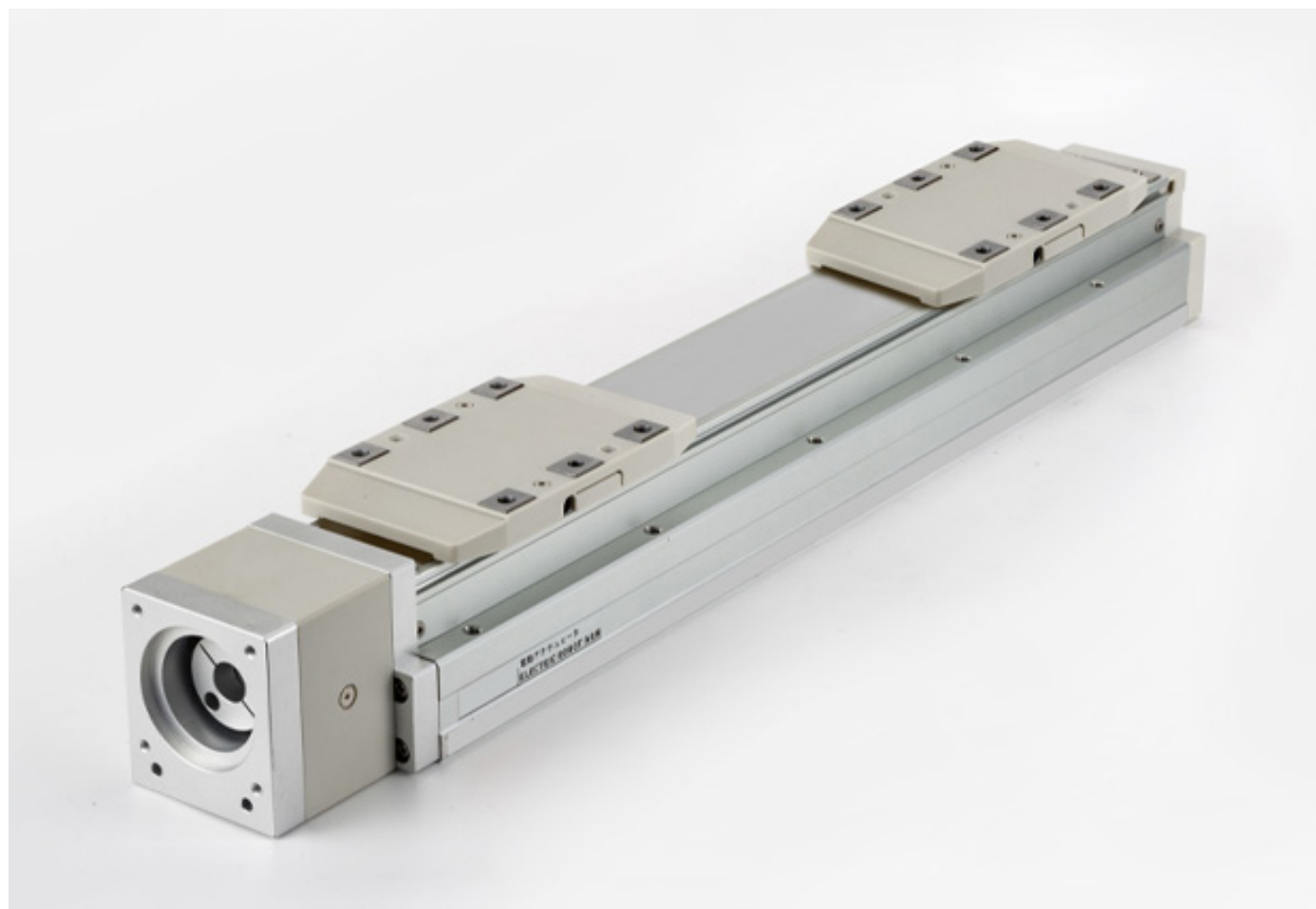
Motor Right Side



Unit: mm

Stroke	25	50	75	100	125	150	175	200	225	250	275	300	325	350	375	400	425
L	514.5	564.5	614.5	664.5	714.5	764.5	814.5	864.5	914.5	964.5	1014.5	1064.5	1114.5	1164.5	1214.5	1264.5	1314.5
A	50	100	50	100	50	100	50	100	50	100	50	100	50	100	50	100	50
M	2	2	3	3	4	4	5	5	6	6	7	7	8	8	9	9	10
N	8	8	10	10	12	12	14	14	16	16	18	18	20	20	22	22	24
P	250	300	350	400	450	500	550	600	650	700	750	800	850	900	950	1000	1050
KG	7.16	7.68	8.2	8.72	9.24	9.76	10.28	10.8	11.32	11.84	12.36	12.88	13.4	13.92	14.44	14.96	15.48

Stroke	25	50	75	100	125	150	175	200	225	250	275	300	325	350	375	400	425
L	514.5	564.5	614.5	664.5	714.5	764.5	814.5	864.5	914.5	964.5	1014.5	1064.5	1114.5	1164.5	1214.5	1264.5	1314.5
A	50	100	50	100	50	100	50	100	50	100	50	100	50	100	50	100	50
M	2	2	3	3	4	4	5	5	6	6	7	7	8	8	9	9	10
N	8	8	10	10	12	12	14	14	16	16	18	18	20	20	22	22	24
P	250	300	350	400	450	500	550	600	650	700	750	800	850	900	950	1000	1050
KG	7.16	7.68	8.2	8.72	9.24	9.76	10.28	10.8	11.32	11.84	12.36	12.88	13.4	13.92	14.44	14.96	15.48



Max. Stroke	450mm	Max. Speed	250mm/s	Motor Output	400W	Ball Screw	φ16mm
-------------	-------	------------	---------	--------------	------	------------	-------

GTHA8S - L5 - 100 - BC - M40B - C4 - 0001

Model | **Stroke** | **Motor Position** | **Motor Brand, Power Output** | **Home Sensor** | **Limit Sensor** | **Customization Order No.**

BC	Motor Exposed	M	Mitsubishi	05	-	B	C	Outside	3	1 P c
BM	Motor Bottom Side	P	Panasonic	10	-		D	Opposite Motor Side	4	2 P c
BL	Motor Left Side	Y	Yaskawa	20	-			NO SENSOR	5	No Sensor
BR	Motor Right Side	T	Delta	40	400W		E	No Sensor		

Ball Screw Lead
5 | 5mm

Stroke
25-450mm
25mm Pitch

Home Sensor
C | Outside
D | Opposite Motor Side
E | No Sensor

Limit Sensor
3 | 1 P c
4 | 2 P c
5 | No Sensor

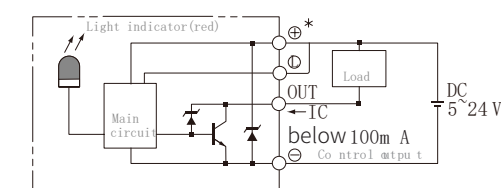
Motor Brand, Power Output
M | Mitsubishi | 05 | - | B
P | Panasonic | 10 | - |
Y | Yaskawa | 20 | - |
T | Delta | 40 | 400W |
If No Brake, No Description

When the stroke is 50mm, the sensor installation has the following restrictions:
1. Home sensor and limit sensor has to installed on the different side or body.
2. Both Sides of slider need to install the sensor trigger device.

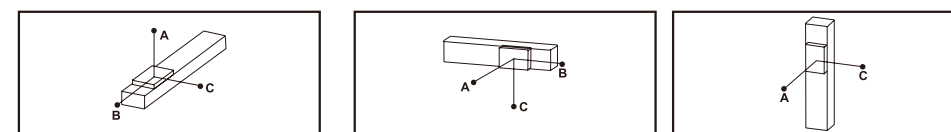
Specification

Spec	Repeatability (mm)	±0.01		
	Ball Screw Lead (mm)	5		
	Max. Speed (mm/s)	250		
	Max. Payload	Horizontal (kg)	50 (Daul carriage)	
		Vertical (kg)	15 (Daul carriage)	
	Rated Thrust (N)	1388		
Parts	Stroke/Pitch (mm)	25-450m/25 mm Pitch		
	AC Servo Motor Ouput (W)	400		
	Ball Screw Ø (mm)	C7φ16		
	Coupling (mm)	10x14		
Home Sensor	Outside	EE-SX674(NPN)		

Sensor Layout

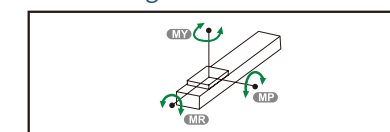


Allowable Moment



Horizontal Installation				Wall Installation				Vertical Installation					
Lead	Weight	A	B	A	B	C	Lead	Weight	A	C			
5	20kg	1560	153	237	5	20kg	214	153	1435	5	10kg	331	331
	35kg	890	81	126		35kg	113	81	845		15kg	220	220
	50kg	550	53	82		50kg	74	53	506		-	-	-

Static Loading Moment



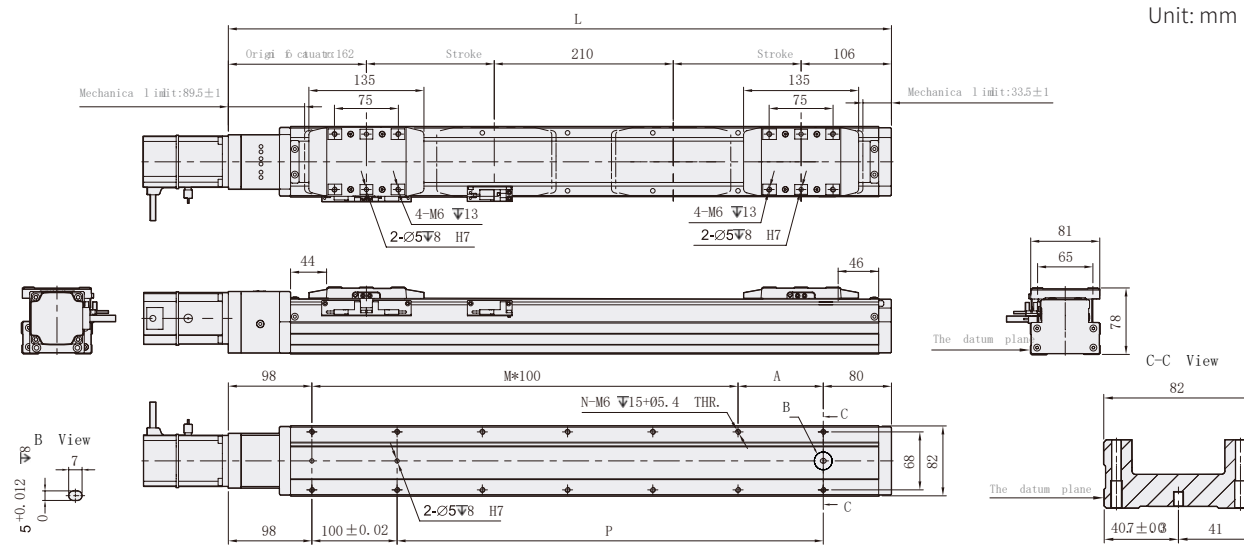
MY	318
MP	318
MR	626

The torque value in the chart indicate the center of gravity. Operation life is 10,000km when the product is using under the specified conditions. Data information is not for ceiling-mount inverse use. Contact us for the details if you want to apply ceiling-mount inverse usage.

Suitable Motor Brand

Brand	Mark	Brake	Walt	AC-Voltage	Motor Model	Driver Model
Mitsubishi	M	No Brake (Horizontal Type)	400	220	HG-KR43	MR-J4-40A
		With Brake (Vertical Type)	400	220	HG-KR43B	MR-J4-40A
Panasonic	P	No Brake (Horizontal Type)	400	220	MSMD042G1U	MADHT2510
		With Brake (Vertical Type)	400	220	MSMD042G1V	MADHT2510
Delta	T	No Brake(Horizontal Type)	400	220	ECMA-C20604ES	ASD-B20421-B
		With Brake(Vertical Type)	400	220	ECMA-C20604FS	ASD-B20421-B

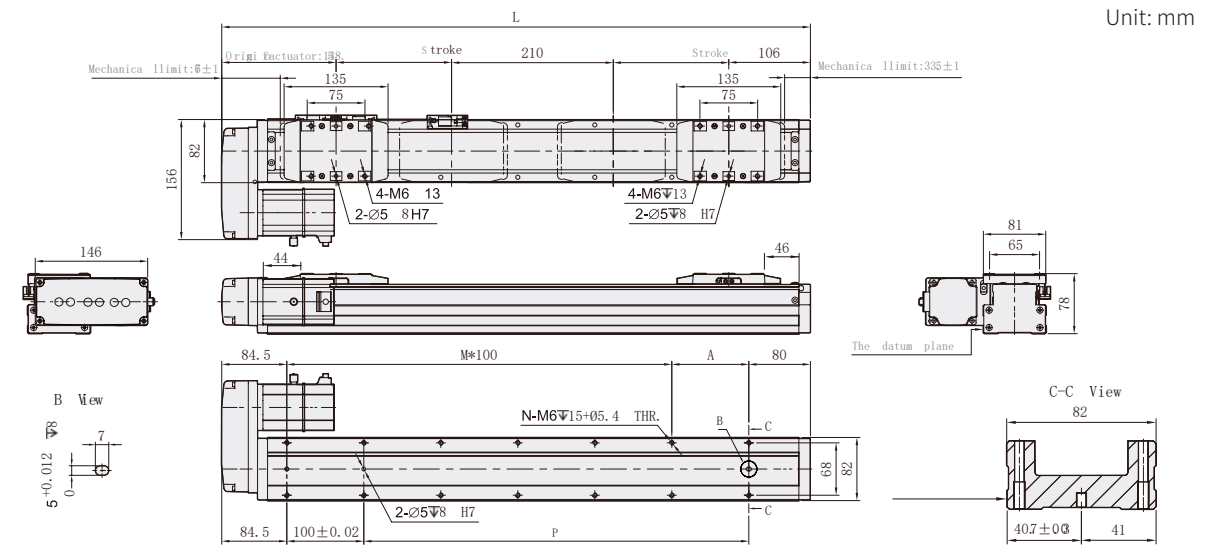
Motor Exposed



Unit: mm

Stroke	25	50	75	100	125	150	175	200	225	250	275	300	325	350	375	400	425
L	528	578	628	678	728	778	828	878	928	978	1028	1078	1128	1178	1228	1278	1328
A	50	100	50	100	50	100	50	100	50	100	50	100	50	100	50	100	50
M	3	3	4	4	5	5	6	6	7	7	8	8	9	9	10	10	11
N	10	10	12	12	14	14	16	16	18	18	20	20	22	22	24	24	26
P	250	300	350	400	450	500	550	600	650	700	750	800	850	900	950	1000	1050
KG	6.64	7.00	7.37	7.73	8.10	8.46	8.83	9.19	9.56	9.92	10.29	10.65	11.02	11.38	11.75	12.11	12.48

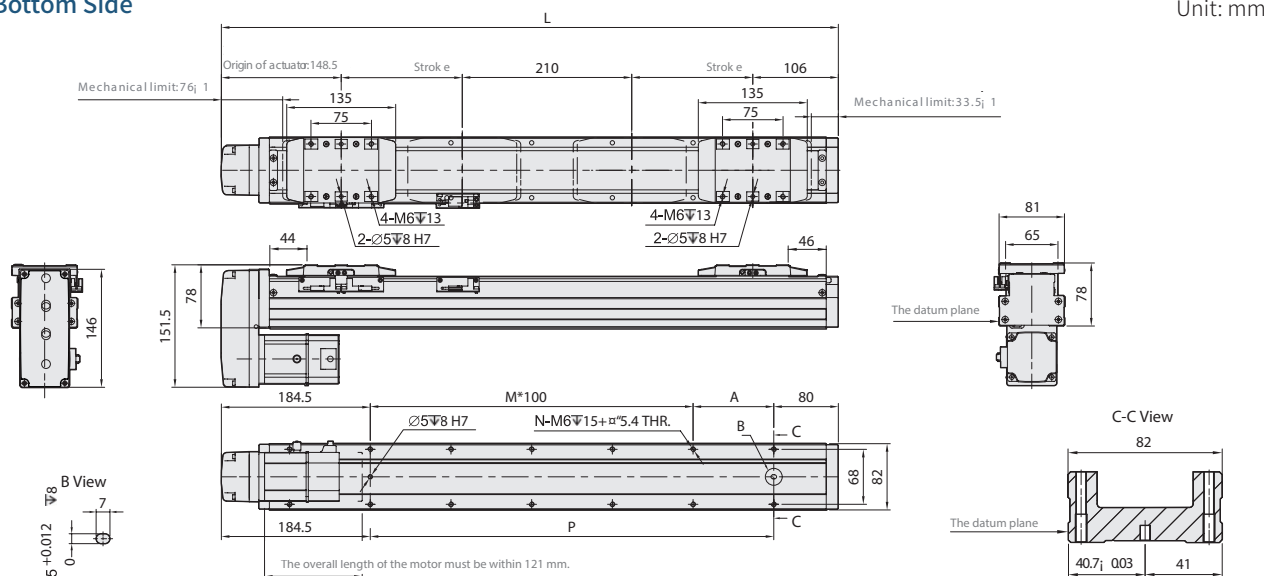
Motor Left Side



Unit: mm

Stroke	25	50	75	100	125	150	175	200	225	250	275	300	325	350	375	400	425
L	514.5	564.5	614.5	664.5	714.5	764.5	814.5	864.5	914.5	964.5	1014.5	1064.5	1114.5	1164.5	1214.5	1264.5	1314.5
A	50	100	50	100	50	100	50	100	50	100	50	100	50	100	50	100	50
M	2	2	3	3	4	4	5	5	6	6	7	7	8	8	9	9	10
N	8	8	10	10	12	12	14	14	16	16	18	18	20	20	22	22	24
P	250	300	350	400	450	500	550	600	650	700	750	800	850	900	950	1000	1050
KG	7.16	7.68	8.2	8.72	9.24	9.76	10.28	10.8	11.32	11.84	12.36	12.88	13.4	13.92	14.44	14.96	15.48

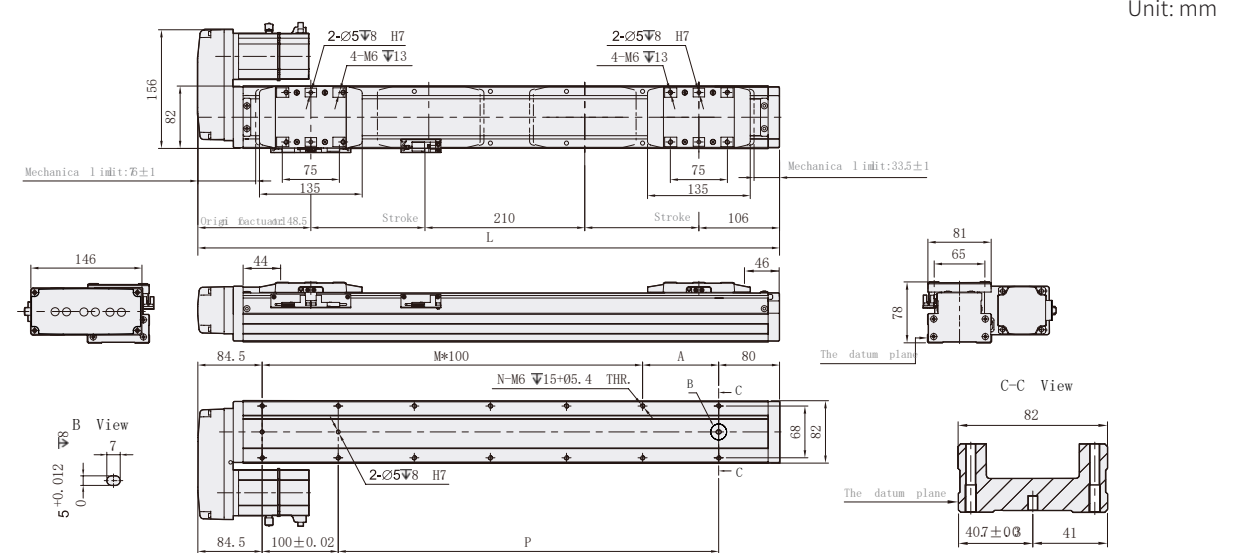
Motor Bottom Side



Unit: mm

Stroke	25	50	75	100	125	150	175	200	225	250	275	300	325	350	375	400	425
L	514.5	564.5	614.5	664.5	714.5	764.5	814.5	864.5	914.5	964.5	1014.5	1064.5	1114.5	1164.5	1214.5	1264.5	1314.5
A	50	100	50	100	50	100	50	100	50	100	50	100	50	100	50	100	50
M	2	2	3	3	4	4	5	5	6	6	7	7	8	8	9	9	10
N	8	8	10	10	12	12	14	14	16	16	18	18	20	20	22	22	24
P	250	300	350	400	450	500	550	600	650	700	750	800	850	900	950	1000	1050
KG	7.16	7.68	8.2	8.72	9.24	9.76	10.28	10.8	11.32	11.84	12.36	12.88	13.4	13.92	14.44	14.96	15.48

Motor Right Side



Unit: mm

Stroke	25	50	75	100	125	150	175	200	225	250	275	300	325	350	375	400	425
L	514.5	564.5	614.5	664.5	714.5	764.5	814.5	864.5	914.5	964.5	1014.5	1064.5	1114.5	1164.5	1214.5	1264.5	1314.5
A	50	100	50	100	50	100	50	100	50	100	50	100	50	100	50	100	50
M	2	2	3	3	4	4	5	5	6	6	7	7	8	8	9	9	10
N	8	8	10	10	12	12	14	14	16	16	18	18	20	20	22	22	24
P	250	300	350	400	450	500	550	600	650	700	750	800	850	900	950	1000	1050
KG	7.16	7.68	8.2	8.72	9.24	9.76	10.28	10.8	11.32	11.84	12.36	12.88	13.4	13.92	14.44	14.96	15.48



SCREW TECHNOLOGY CO.,LTD.

Add:No 988,Wsong Road,Wuzhong Disrict,Suzhou,China

Tel:+86-0512-66903936,+86-0512-65073935

E-mail:IMD@screwtech.cn

Web:<http://www.screw-tech.com/>

V-6.3
20220908