

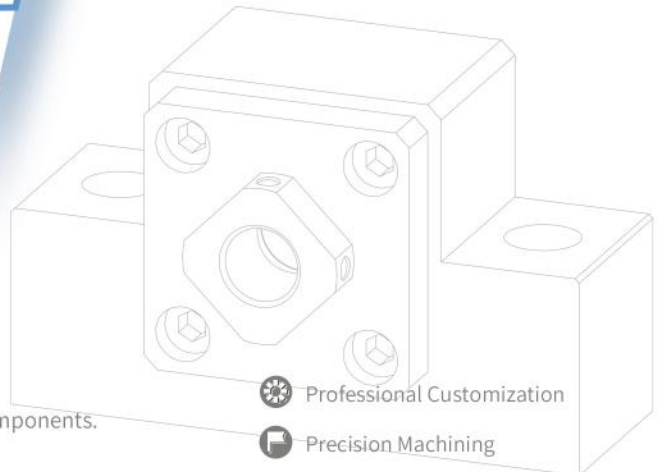
SUPPORT UNIT



PRODUCT MANUAL

SCREW TECHNOLOGY CO.,LTD.

Transmission parts and supporting mechanical parts.
Linear transmission components, such as single-axis and multi-axis components.
Motors, controllers, sensors, encoders, etc.
Design, assembly and debugging of non-standard automation equipment, etc.



-  Professional Customization
-  Precision Machining
-  High Quality Assurance



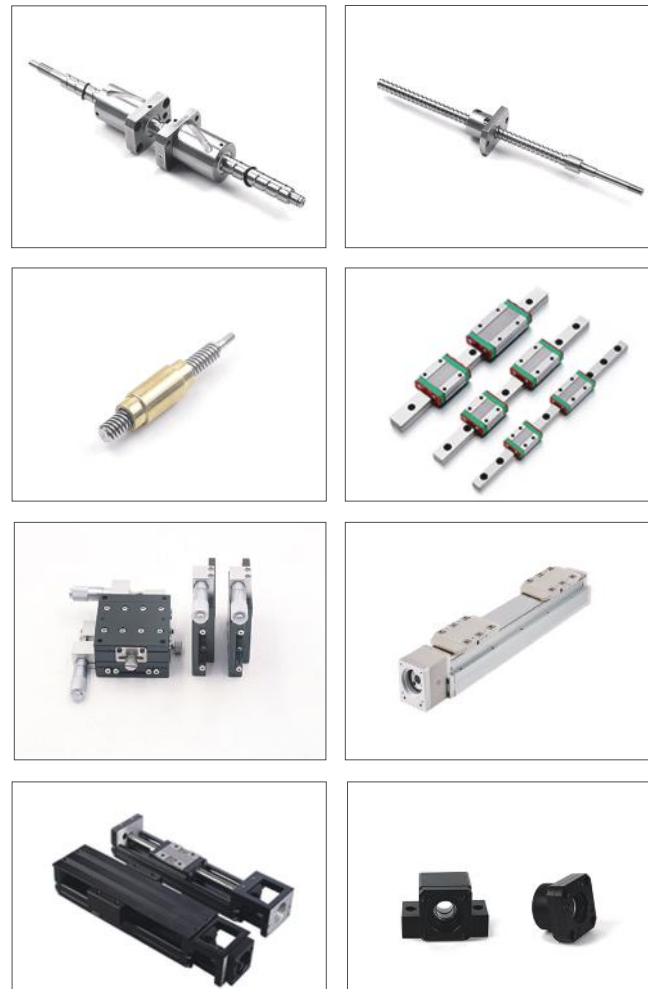
ABOUT US

We SCREW TECHNOLOGY CO., LIMITED is established in 2011, is a manufacturer of linear motion systems. We committed to providing customers with linear motion solutions. Adhering to the business philosophy of "professional, integrity, and efficiency", we look forward to contributing to the world's automated manufacturing.

Our products include:

- ▶ Transmission parts and supporting mechanical parts, such as: ball screw and lead screw, guide rail, ball spline, coupling, support unit, nut seat, motor house, adapter plate, bearing, etc.;
- ▶ Linear transmission components, such as: single axis robot, multi-axis linear modules, electric cylinders, and linear platforms;
- ▶ Motors, controllers, sensors, encoders, etc., such as: stepper motors, servo motors, drivers, etc.;
- ▶ Design, assembly and debugging of non-standard automation equipment.

OTHER PRODUCTS



CONTENT



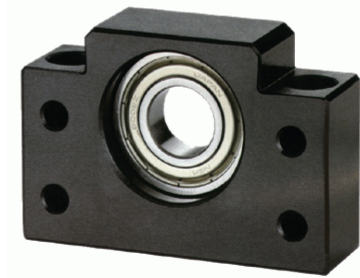
AF Series	03
AK Series	04
BF Series	06
BK Series	08
EF Series	10
EK Series	11
FF Series	13
FK Series	15
Support kits for miniature ball screws	17
WBK Series Heavy Load	18
Lock Nut	20
Suggested Mounting End	21

Support Unit

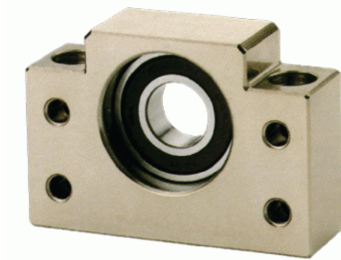
AF Series

Model No.	Surface treatment	Bearing
AF10	Black Oxide	608ZZ
		608ZZ
	Electyless Nickel Plating	608DD
AF12	Black Oxide	6000ZZ
		6000ZZ
	Electyless Nickel Plating	6000DDU
AF15	Black Oxide	6002ZZ
		6002ZZ
	Electyless Nickel Plating	6002DDU
AF20	Black Oxide	6204ZZ
		6204ZZ
	Electyless Nickel Plating	6204DDU

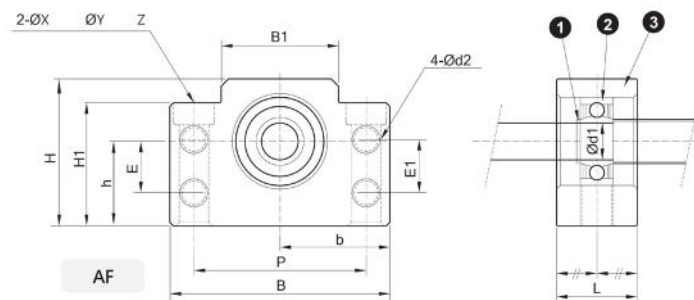
1. It is used double pressed steel cages for Black Oxide type support units.
2. It is used double plastic cages for Electroless Nickel Plating type support units.
3. All of bearings Use Japan' s brand bearings.



Black Oxide
(Fit for normal conditions)



Nickel Plating
(fit for dust-free conditions)



Part No.	Part name	Qty
1	Block Body	1 pc
2	Bearing	1 set
3	C-Rings	1 pc

Unit: mm

Model No	d1	L	B	H	b		B1	H1	E1	P	d2	X	Y	Z	E	Bearing	C-ring
					0.02	0.02											
AF10	8	20	60	43	35	25	36	35	19	52	6.5	9	14	11	15	608ZZ	S 08
AF12	10	20	60	43	35	25	36	35	19	52	6.5	9	14	11	15	6000ZZ	S 10
AF15	15	20	80	49	40	30	41	40	19	60	6.5	9	14	11	15	6002ZZ	S 15
AF20	20	26	95	58	47.5	30	56	45	19	75	6.5	11	17	15	15	6204ZZ	S 20

Support Unit

AK Series

Model No.	Surface treatment	Bearing
AK10	Black Oxide	7000A P0
		7000A P5
AK12	Electyless Nickel Plating	7000A P0
		7000A P5
AK15	Black Oxide	7001A P0
		7001A P5
AK15	Electyless Nickel Plating	7001A P0
		7001A P5
AK15	Black Oxide	7002A P0
		7002A P5
AK15	Electyless Nickel Plating	7002A P0
		7002A P5
AK20	Black Oxide	7204A P0
		7204B P0
		7204A P0
		7204B P0
		7204A P5
	Electyless Nickel Plating	7204A P0
		7204B P0
		7204A P0
		7204B P0
		7204A P5



Black Oxide
(Fit for normal conditions)

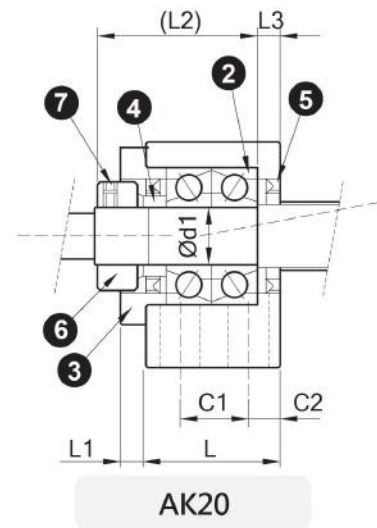
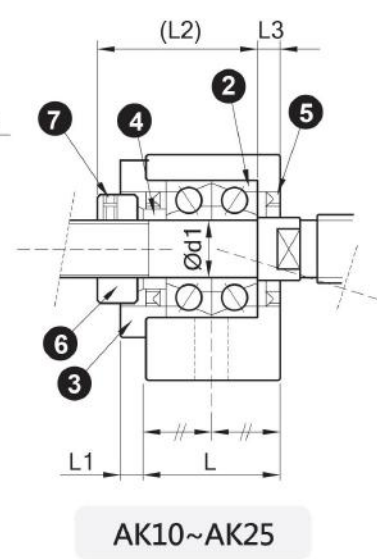
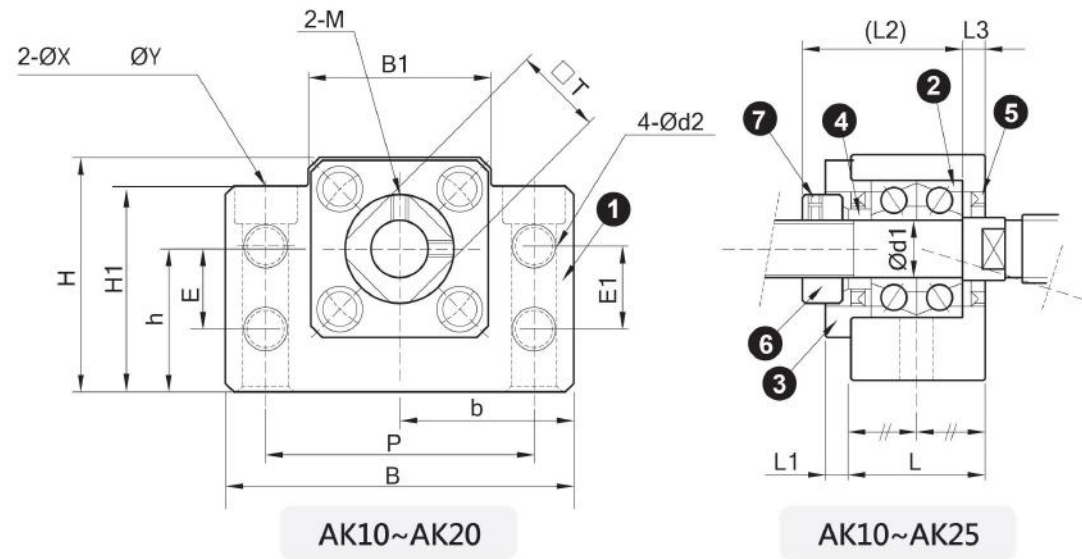


Nickel Plating
(fit for dust-free conditions)



1. It is used double pressed steel cages for Black Oxide type support units.
2. It is used double plastic cages for Electroless Nickel Plating type support units.
3. All of bearings Use Japan' s brand bearings.

Support Unit



Part No.	Part name	Qty
1	Block Body	1 pc
2	Bearing	1set
3	Binder Pate	1 pc
4	Distance Ring	2 pcs
5	Seal	2 pcs
6	Lock Nut	1 set
7	Hexagon Socket Set Screw	2 pcs

Unit: mm

Model No.	d1	L	L1	L2	L3	B	H	b		B1	H1	E1	P	d2	X	Y	Z	M	T	E	C1	C2
								0.02	0.02													
AK10	10	24	6	30	6	70	43	35	25	36	35	19	52	6.5	9	14	11	M3	16	15	-	-
AK12	12	24	6	30	6	70	43	35	25	36	35	19	52	6.5	9	14	11	M4	19	15	-	-
AK15	15	25	6	36	5	80	49	40	30	41	40	19	60	6.5	11	17	15	M4	22	15	-	-
AK17	20	42	10	50	10	95	58	48	30	56	45	19	75	6.5	11	17	15	M4	30	15	22	10

Support Unit

BF Series

Model No.	Surface treatment	Bearing
BF10	Black Oxide	608ZZ
	Electyless Nickel Plating	608DD
BF12	Black Oxide	6000ZZ
	Electyless Nickel Plating	6000DDU
BF15	Black Oxide	6002ZZ
	Electyless Nickel Plating	6002DDU
BF17	Black Oxide	6203ZZ
	Electyless Nickel Plating	6203DDU
BF20	Black Oxide	6004ZZ
	Electyless Nickel Plating	6004DDU
BF25	Black Oxide	6205ZZ
	Electyless Nickel Plating	6205DDU
BF30	Black Oxide	6206ZZ
	Electyless Nickel Plating	6206DDU
BF35	Black Oxide	6207ZZ
	Electyless Nickel Plating	6207DDU
BF40	Black Oxide	6208ZZ
	Electyless Nickel Plating	6208DDU



Black Oxide
(Fit for normal conditions)



Nickel Plating
(fit for dust-free conditions)

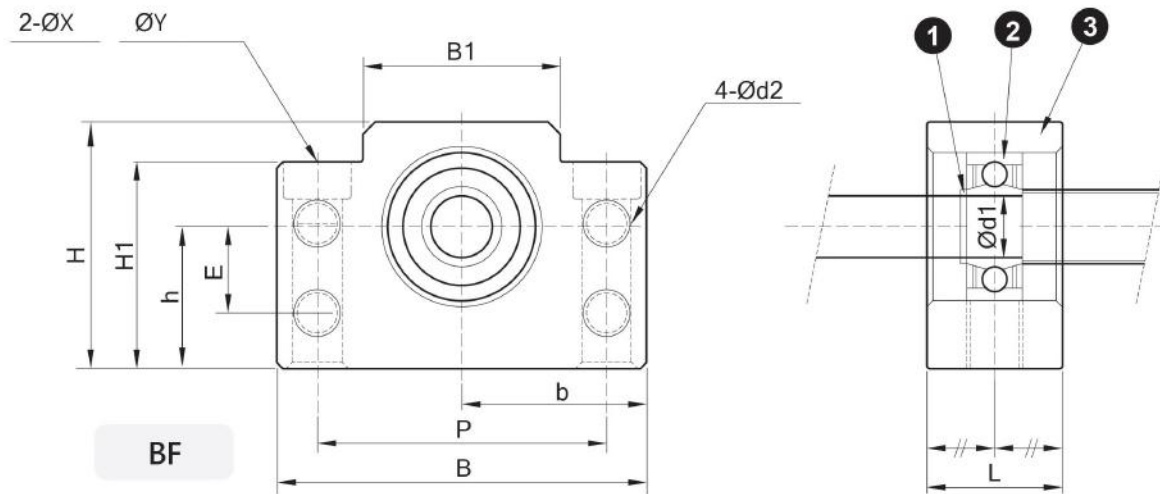
1. It is used double pressed steel cages for Black Oxide type support units.
2. It is used double plastic cages for Electroless Nickel Plating type support units.
3. All of bearings Use Japan's brand bearings.

Support Unit

Support Unit

BK Series

Part No.	Part name	Qty
1	Block Body	1 pc
2	Bearing	1 set
3	C-Rings	1 pc



Model No.	d1	L	B	H	b		B1	H1	E	P	d2	X	Y	Z	Bearing	C-ring
					0.02	0.02										
BF10	8	20	60	39	30	22	34	33	15	46	5.50	6.60	10.80	5.00	608ZZ	S 08
BF12	10	20	60	43	30	25	34	33	18	46	5.50	6.60	10.80	1.50	6000ZZ	S 10
BF15	15	20	70	48	35	28	40	38	18	54	5.50	6.60	11.00	6.50	6002ZZ	S 15
BF17	17	23	86	64	43	39	50	55	28	68	6.60	9.00	14.00	8.50	6203ZZ	S 17
BF20	20	26	88	60	44	34	52	50	22	70	6.60	9.00	14.00	8.50	6004ZZ	S 20
BF25	25	30	106	80	53	48	64	70	33	85	9.00	11.00	17.50	11.00	6205ZZ	S 25
BF30	30	32	128	89	64	51	76	78	33	102	11.00	14.00	20.00	13.00	6206ZZ	S 30
BF35	35	32	140	96	70	52	88	79	35	114	11.00	14.00	20.00	13.00	6207ZZ	S 35
BF40	40	37	160	110	80	60	100	90	37	130	14.00	18.00	26.00	17.50	6208ZZ	S 40



Black Oxide
(Fit for normal conditions)



Nickel Plating
(fit for dust-free conditions)

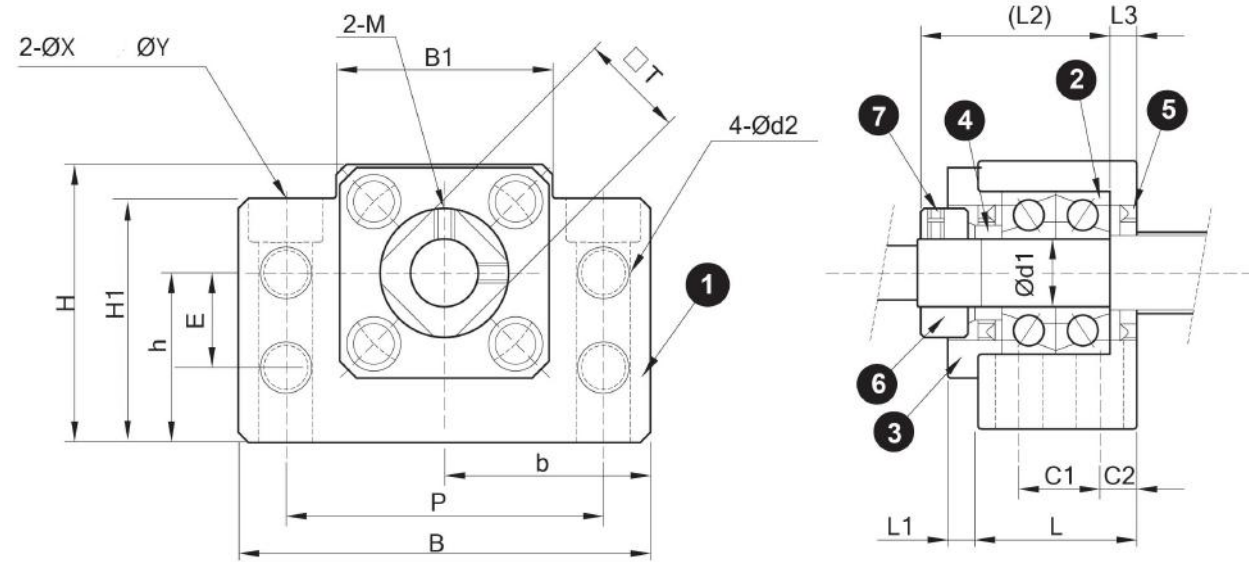
Model No.	Surface treatment	Bearing
BK10	Black Oxide	7000A P0 7000A P5
	Electyless Nickel Plating	7000A P0 7000A P5
BK12	Black Oxide	7001A P0 7001A P5
	Electyless Nickel Plating	7001A P0 7001A P5
BK15	Black Oxide	7002A P0 7002A P5
	Electyless Nickel Plating	7002A P0 7002A P5
BK17	Black Oxide	7203A P0 7203A P5
	Electyless Nickel Plating	7203A P0 7203A P5
BK20	Black Oxide	7004A P0 7004A P5
	Electyless Nickel Plating	7004A P0 7004A P5

Model No.	Surface treatment	Bearing				
BK25	Black Oxide	7205A P0 7205B P0 7205A P0 7205B P0 7205A P5				
		Electyless Nickel Plating	7205A P0 7205B P0 7205A P0 7205B P0 7205A P5			
			BK30	Black Oxide	7206A P0 7206B P0 7206A P0 7206B P0 7206A P5	
					Electyless Nickel Plating	7206A P0 7206B P0 7206A P0 7206B P0 7206A P5
						BK35
Electyless Nickel Plating	7207B P0 7207B P5					
BK40	Black Oxide	7208B P0 7208B P5				
	Electyless Nickel Plating	7208B P0 7208B P5				

1. It is used double pressed steel cages for Black Oxide type support units.
2. It is used double plastic cages for Electroless Nickel Plating type support units.
3. All of bearings Use Japan' s brand bearings.

Support Unit

Part No.	Part name	Qty
1	Block Body	1 pc
2	Bearing	1set
3	Binder Pate	1 pc
4	Distance Ring	2 pcs
5	Seal	2 pcs
6	Lock Nut	1 set
7	Hexagon Socket Set Screw	2 pcs



Model No.	d1	L	L1	L2	L3	B	H	b		h	B1	H1	E	P	C1	C2	d2	X	Y	Z	M	T
								0.02	0.02													
BK10	10	25	5	29	5	60	39	30	22	34	33	15	46	13	6	5.5	6.6	11	5	M3	16	
BK12	12	25	5	29	5	60	43	30	25	34	33	18	46	13	6	5.5	6.6	11	1.5	M4	19	
BK15	15	27	6	32	6	70	48	35	28	40	38	18	54	15	6	5.5	6.6	11	6.5	M4	22	
BK17	17	35	9	44	7	86	64	43	39	50	55	28	68	19	8	6.6	9	14	8.5	M4	24	
BK20	20	35	8	43	8	88	60	44	34	52	50	22	70	19	8	6.6	9	14	8.5	M4	30	
BK25	25	42	12	54	9	106	80	53	48	64	70	33	85	22	10	9	11	18	11	M5	35	
BK30	30	45	14	61	9	128	89	64	51	76	78	33	102	23	11	11	14	20	13	M6	40	
BK35	35	50	14	67	12	140	96	70	52	88	79	35	114	26	12	11	14	20	13	M8	50	
BK40	40	61	18	76	15	160	110	80	60	100	90	37	130	33	14	14	18	26	18	M8	50	

Support Unit

EF Series

Model No.	Surface treatment	Bearing
EF06	Black Oxide	606ZZ
	Electyless Nickel Plating	606VV
EF08	Black Oxide	606ZZ
	Electyless Nickel Plating	606VV
EF10	Black Oxide	608ZZ
	Electyless Nickel Plating	608DD
EF12	Black Oxide	6000ZZ
	Electyless Nickel Plating	6000DDU
EF15	Black Oxide	6002ZZ
	Electyless Nickel Plating	6002DDU
EF20	Black Oxide	6204ZZ
	Electyless Nickel Plating	6204DDU

All of bearings Use Japan's brand bearings.

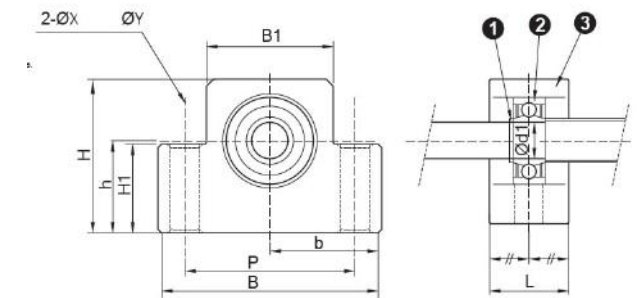


Black Oxide
(Fit for normal conditions)



Nickel Plating
(fit for dust-free conditions)

Part No.	Part name	Qty
1	Block Body	1 pc
2	Bearing	1set
3	C-ring	1 pc



Model No.	d1	L	B	H	b		h	B1	H1	P	X	Y	Z	Bearing	C-ring
					0.02	0.02									
EF06	6	12	42	25	21	13	18	20	30	5.5	9.5	11	606ZZ	S 06	
EF08	6	14	52	32	36	17	25	26	38	6.6	11	12	606ZZ	S 06	
EF10	8	20	70	43	35	25	36	24	52	9	-	-	608ZZ	S 08	
EF12	10	20	70	43	35	25	36	24	52	9	-	-	6000ZZ	S 10	
EF15	15	20	80	49	40	30	41	25	60	11	-	-	6002ZZ	S 15	
EF20	20	26	95	58	47.5	30	56	25	75	11	-	-	6204ZZ	S 20	

Support Unit

EK Series

Model	Surface treatment	Bearing
EK05	Black Oxide	605
	Electyless Nickel Plating	605
EK06	Black Oxide	606
		706A P0
		706A P5
	Electyless Nickel Plating	606
		706A P0
		706A P5
EK08	Black Oxide	608
		708A P0
		708A P5
	Electyless Nickel Plating	608
		708A P0
		708A P5
EK10	Black Oxide	7000A P0
		7000A P5
	Electyless Nickel Plating	7000A P0
		7000A P5
EK12	Black Oxide	7001A P0
		7001A P5
	Electyless Nickel Plating	7001A P0
		7001A P5
EK15	Black Oxide	7002A P0
		7002A P5
	Electyless Nickel Plating	7002A P0
		7002A P5
EK20	Black Oxide	7204A P0
		7204B P0
		7204A P0
		7204B P0
		7204A P5
	Electyless Nickel Plating	7204A P0
		7204B P0
		7204A P0
		7204B P0
		7204A P5



Black Oxide
(Fit for normal conditions)



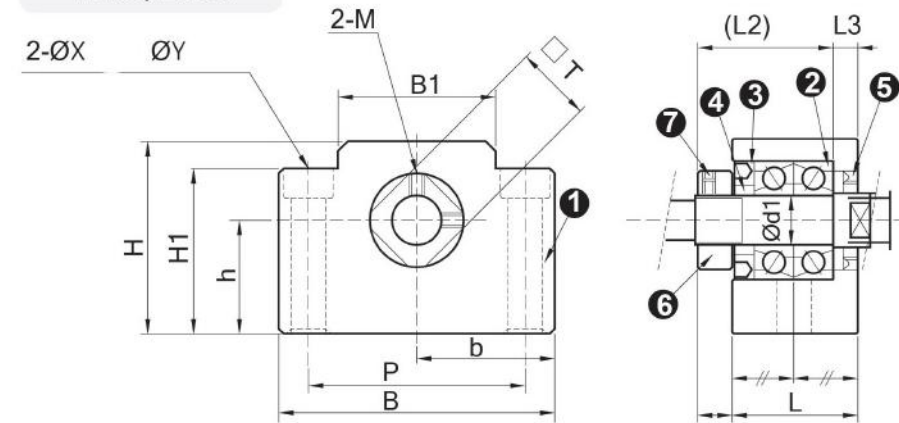
Nickel Plating
(fit for dust-free conditions)

1. All of bearings Use Japan's brand bearings.

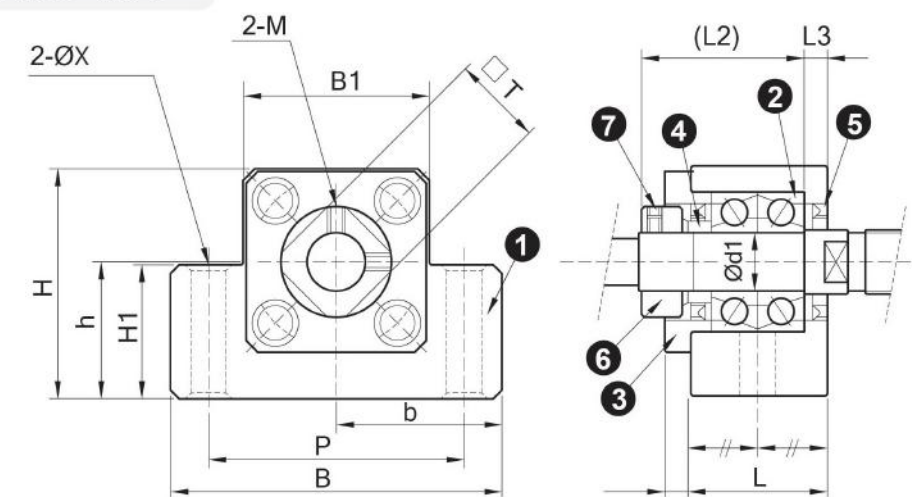
Support Unit

Part No.	Part name	Qty
1	Block Body	1 pc
2	Bearing	1set
3	Binder Pate	1 pc
4	Distance Ring	2 pcs
5	Seal	2 pcs
6	Lock Nut	1 set
7	Hexagon Socket Set Screw	2 pcs

EK06, EK08



EK10~EK20



Model No	d1	L	L1	L2	L3	B	H	h		B1	H1	P	X	Y	Z	M	T
								0.02	0.02								
EK05	5	17	5.5	19	3.5	26	21	18	11	20	8	28	4.5	-	-	M3	11
EK06	6	20	5.5	22	3.5	42	25	21	13	18	20	30	5.5	9.5	11	M3	12
EK08	8	23	7	26	4	52	32	36	17	25	26	38	6.6	11	12	M3	14
EK10	10	24	6	30	6	70	43	35	25	36	24	52	9	-	-	M3	16
EK12	12	24	6	30	6	70	43	35	25	36	24	52	9	-	-	M4	19
EK15	15	25	6	36	5	80	49	40	30	41	25	60	11	-	-	M4	22
EK20	20	42	10	50	10	95	58	47.5	30	56	25	75	11	-	-	M4	30

Support Unit

FF Series

Model	Surface treatment	Bearing
FF06	Black Oxide	606ZZ
	Electyless Nickel Plating	606VV
FF10	Black Oxide	608ZZ
	Electyless Nickel Plating	608DD
FF12	Black Oxide	6000ZZ
	Electyless Nickel Plating	6000DDU
FF15	Black Oxide	6002ZZ
	Electyless Nickel Plating	6002DDU
FF17	Black Oxide	6203ZZ
	Electyless Nickel Plating	6203DDU
FF20	Black Oxide	6204ZZ
	Electyless Nickel Plating	6204DDU
FF25	Black Oxide	6205ZZ
	Electyless Nickel Plating	6205DDU
FF30	Black Oxide	6206ZZ
	Electyless Nickel Plating	6206DDU

1. All of bearings Use Japan' s brand bearings.



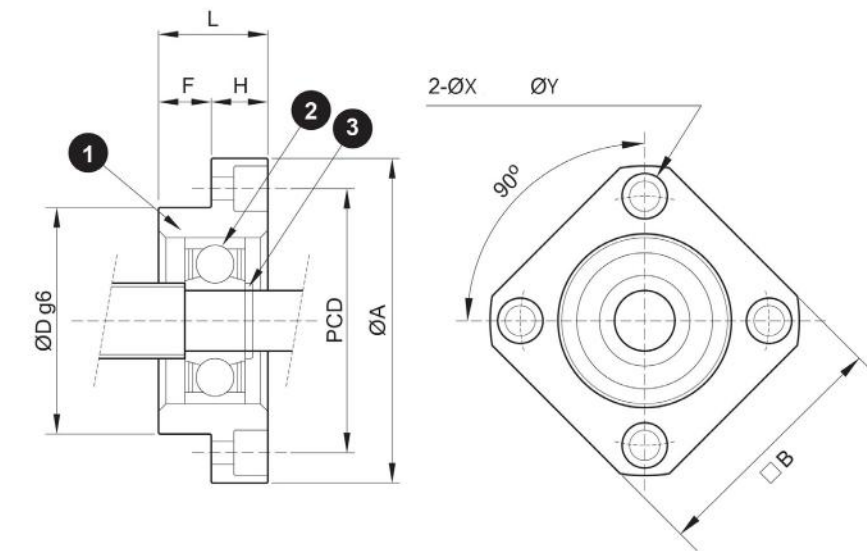
Black Oxide
(Fit for normal conditions)



Nickel Plating
(fit for dust-free conditions)

Support Unit

Part No.	Part name	Qty
1	Block	1 pc
2	Bearing	1 Pair
3	C-Rings	1 pc



Model No	d1	L	H	F	Dg6		A	PCD	B	X	Y	Z	Bearing	C-ring
FF06	6	10	6	4	22	-0.007 -0.02	36	28	28	3.4	6.5	4	606ZZ	S 06
FF10	8	12	7	5	28	-0.007 -0.02	43	35	35	3.4	6.5	4	608ZZ	S 08
FF12	10	15	7	8	34	-0.009 -0.025	52	42	42	4.5	8	4	6000ZZ	S 10
FF15	15	17	9	8	40	-0.009 -0.025	63	50	52	5.5	9.5	5.5	6002ZZ	S 15
FF17	17	20	11	9	50	-0.009 -0.025	77	62	61	6.6	11	6.5	6203ZZ	S 17
FF20	20	20	11	9	57	-0.010 -0.029	85	70	68	6.6	11	6.5	6004ZZ	S 20
FF25	25	24	14	10	63	-0.010 -0.029	98	80	79	9	14	8.5	6205ZZ	S 25
FF30	30	27	18	9	75	-0.010 -0.029	117	95	93	11	17.5	11	6206ZZ	S 30

Support Unit

FK Series



Black Oxide
(Fit for normal conditions)



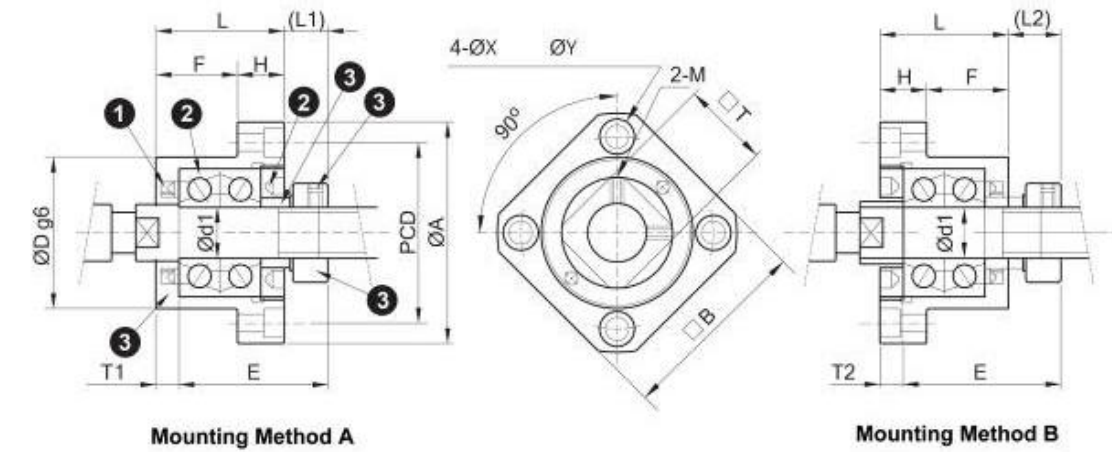
Nickel Plating
(fit for dust-free conditions)

Model	Surface treatment	Bearing
FK05	Black Oxide	605
	Electyless Nickel Plating	605
FK06	Black Oxide	606
		706A P0
	Electyless Nickel Plating	706A P5
		606
FK08	Black Oxide	708A P0
		708A P5
	Electyless Nickel Plating	608
		708A P0
FK10	Black Oxide	7000A P0
		7000A P5
	Electyless Nickel Plating	7000A P0
FK12	Black Oxide	7001A P0
		7001A P5
	Electyless Nickel Plating	7001A P0
FK15	Black Oxide	7002A P0
		7002A P5
	Electyless Nickel Plating	7002A P0
		7002A P5

Model	Surface treatment	Bearing
FK17	Black Oxide	7203A P0
		7203A P5
	Electyless Nickel Plating	7203A P0
		7203A P5
FK20	Black Oxide	7204A P0
		7204B P0
		7204A P0
		7204B P0
	Electyless Nickel Plating	7204A P0
		7204A P0
		7204B P0
		7204B P0
FK25	Black Oxide	7205A P0
		7205B P0
		7205A P0
		7205B P0
	Electyless Nickel Plating	7205A P0
		7205B P0
		7205A P0
		7205B P0
FK30	Black Oxide	7206A P0
		7206B P0
		7206A P0
		7206B P0
	Electyless Nickel Plating	7206A P0
		7206B P0
		7206A P0
		7206B P0

Support Unit

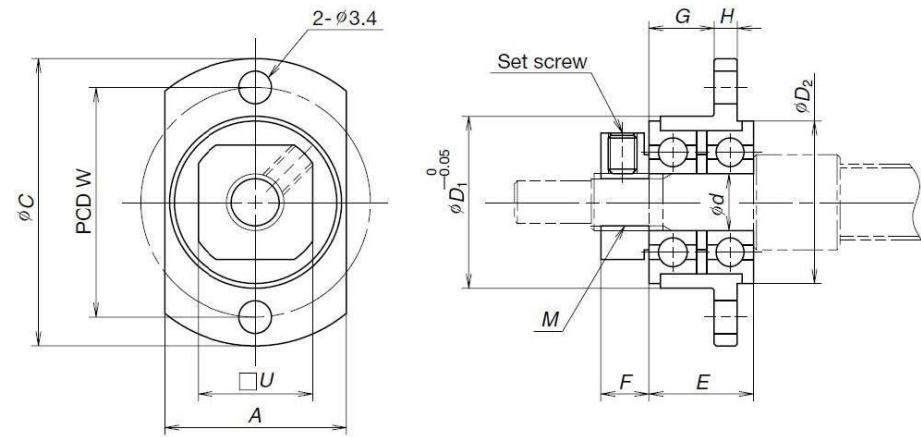
Part No.	Part name	Qty
1	Block Body	1 pc
2	Bearing	1set
3	Binder Pate	1 pc
4	Distance Ring	2 pcs
5	Seal	2 pcs
6	Lock Nut	1 set
7	Hexagon Socket Set Screw	2 pcs



Model No	d1	L	H	F	E	Dg6	A	PCD	B	Mounting A		Mounting B		X	Y	Z	M	T	
										L1	T1	L2	T2						
FK05	5	17	6	11	19	20	-0.007 -0.02	34	26	26	5.5	3.5	7	5	3.4	6.5	4	M3	11
FK06	6	20	7	13	22	22	-0.007 -0.02	36	28	28	5.5	3.5	8.5	6.5	3.4	6.5	4	M3	12
FK08	8	23	9	14	26	28	-0.007 -0.02	43	35	35	7	4	10	7	3.4	6.5	4	M3	14
FK10	10	27	10	17	30	34	-0.009 -0.025	52	42	42	7.5	5	8.5	6	4.5	8	4	M3	16
FK12	12	27	10	17	30	36	-0.009 -0.025	54	44	44	7.5	5	8.5	6	4.5	8	4	M4	19
FK15	15	32	15	17	36	40	-0.009 -0.025	63	50	52	10	6	12	8	5.5	9.5	6	M4	22
FK17	17	45	22	23	47	50	-0.009 -0.025	77	62	61	11	9	14	12	6.6	11	10	M4	24
FK20	20	52	22	30	50	57	-0.010 -0.029	85	70	68	8	10	12	14	6.6	11	10	M4	30
FK25	25	57	27	30	60	63	-0.010 -0.029	98	80	79	13	10	20	17	9	15	13	M5	35
FK30	30	62	30	32	61	75	-0.010 -0.029	117	95	93	11	12	17	18	11	18	15	M6	40

Support Unit

Support kits for miniature ball screws (outer diameter 6mm,8mm ballscrew)



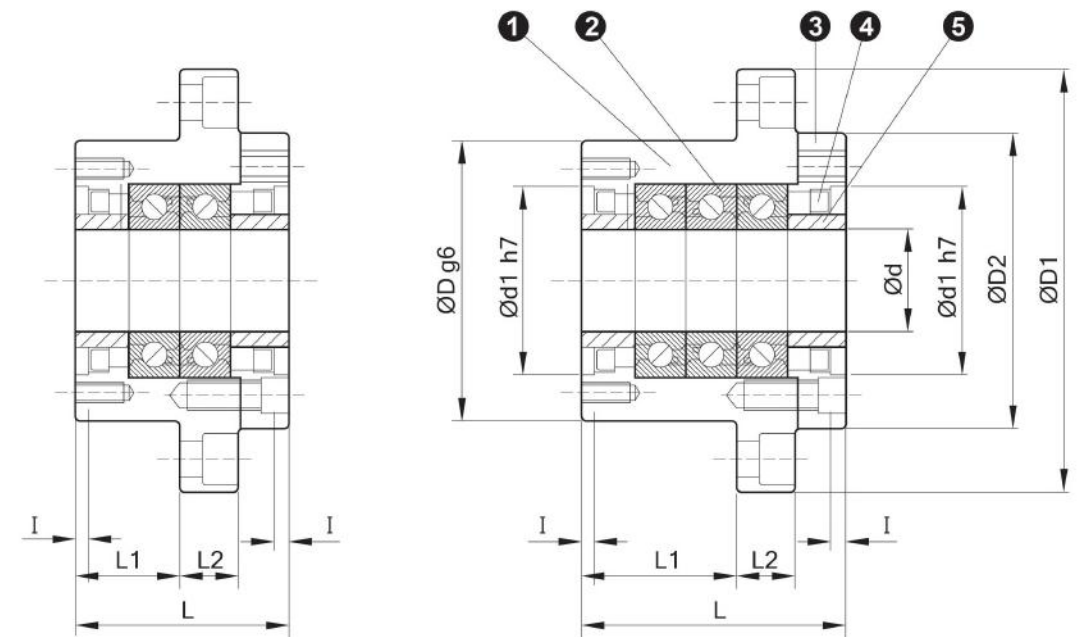
Reference no.	A	C	d	D1	D2	E	F	G	H	W	U	M
WBK04R-11	14	25	4	13	12.5	9	5	5	2.5	19	10	M4x0.5
WBK06R-11	19	30	6	18	17	11	5	6.8	2.5	24	12	M6x0.75

Reference no.	Applicable ballscrew	Locknut tightening torque (reference) [N · cm]	Setscrew tightening torque (reference) [N · cm]
WBK04R-11	MIF0601 MIA0601	147	38 (M2.5)
WBK06R-11	MIF0801 MIF0801.5 MIF0802	245	69 (M3)

Support Unit

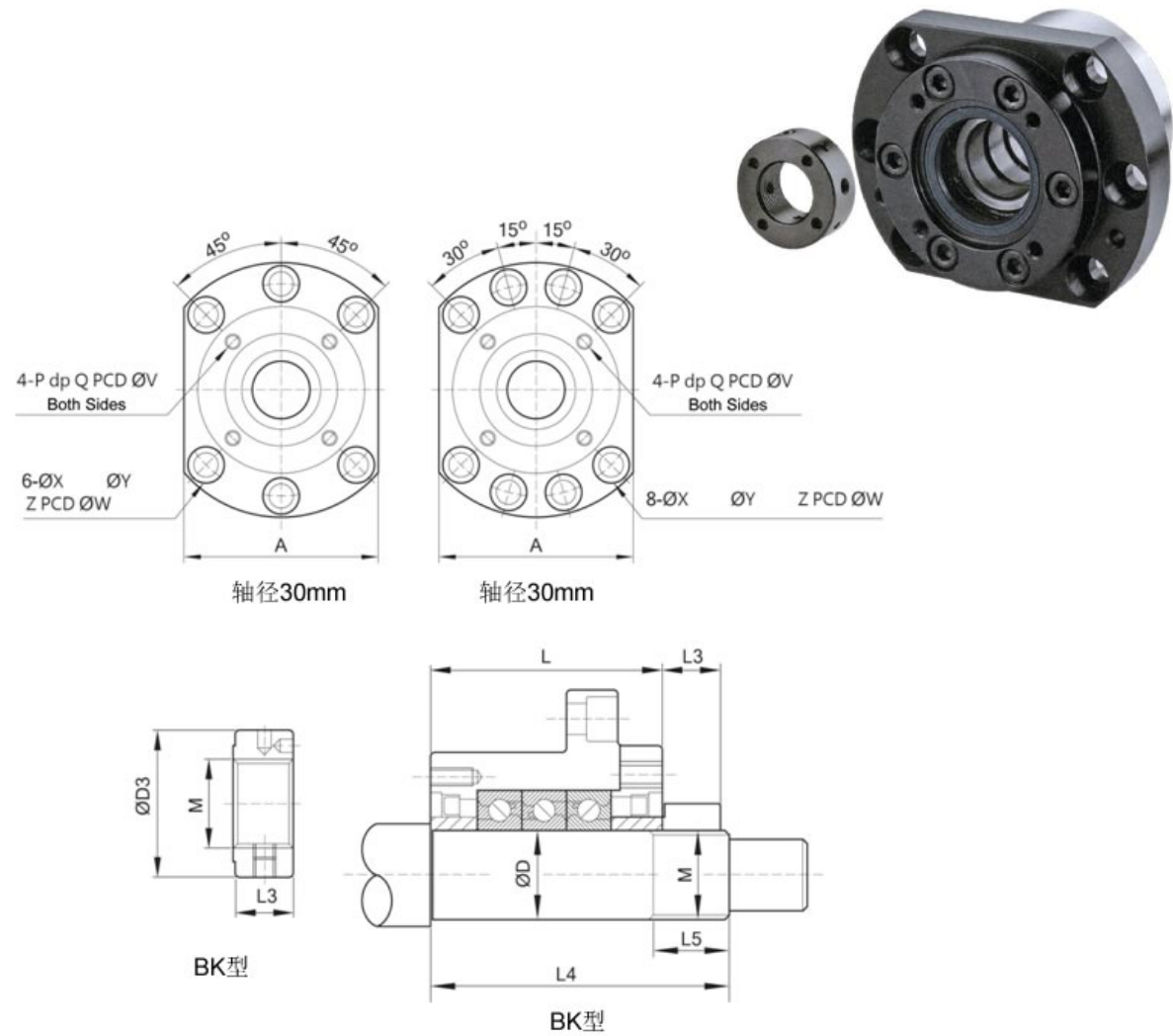
WBK Series Heavy Load

Park No.	Part name	Qty
1	Block Body	1 pc
2	Bearing	1 set
3	Binder Plate	1 pc
4	Distance Ring	2 pcs
5	Seal	2 pcs



Model No	d	D	D1	D2	L	L1	L2	A	W	X	Y	Z	d1	I	V	P	Q
WBK 17DF	17	70	106	72	60	32	15	80	88	9	14	8.5	45	3	58	M5	10
WBK 20DF	20	70	106	72	60	32	15	80	88	9	14	8.5	45	3	58	M5	10
WBK 25DF	25	85	130	90	66	33	18	100	110	11	17.5	11	57	4	70	M6	12
WBK 25DF	25	85	130	90	81	48	18	100	110	11	17.5	11	57	4	70	M6	12
WBK 30DF	30	85	130	90	66	33	18	100	110	11	17.5	11	57	4	70	M6	12
WBK 30DF	30	85	130	90	81	48	18	100	110	11	17.5	11	57	4	70	M6	12
WBK 35DF	35	95	142	102	66	33	18	106	121	11	17.5	11	69	4	80	M6	12
WBK 35DF	35	95	142	102	81	48	18	106	121	11	17.5	11	69	4	80	M6	12
WBK 40DF	40	95	142	102	66	33	18	106	121	11	17.5	11	69	4	80	M6	12
WBK 40DF	40	95	142	102	81	48	18	106	121	11	17.5	11	69	4	80	M6	12

Support Unit



Model No	Bearing	Basic Lad-Ca (N)	Limit Load(N)	Preload (N)	Axial Stiffness (N/um)	Starting Torque (N-cm)	Lock nut			Weight (Kgs)	End Size		
							M	D3	L3		d	L4	L5
WBK 17DF	17TAC47 P4	21900	26600	2150	750	14	M17x1	37	18	1.9	17	81	23
WBK 20DF	20TAC47 P4	21900	26600	2150	750	14	M20x1	40	18	1.9	20	81	23
WBK 25DF	25TAC62 P4	28500	40500	3150	1000	23	M25x1.5	45	20	3.1	25	89	26
WBK 25DF	25TAC62 P4	46500	81500	4300	1470	31	M25x1.5	45	20	3.4	25	104	26
WBK 30DF	30TAC62 P4	29200	43000	3350	1030	24	M30x1.5	50	20	3.0	30	89	26
WBK 30DF	30TAC62 P4	47500	86000	4500	1520	33	M30x1.5	50	20	3.3	30	104	26
WBK 35DF	35TAC72 P4	31000	50000	3800	1180	28	M35x1.5	55	22	3.4	35	92	30
WBK 35DF	35TAC72 P4	50500	100000	5200	1710	37	M35x1.5	55	22	4.3	35	107	30
WBK 40DF	40TAC72 P4	31500	52000	3900	1230	28	M40x1.5	60	22	3.6	40	92	30
WBK 40DF	40TAC72 P4	51500	104000	5300	1810	38	M40x1.5	60	22	4.2	40	107	30

Support Unit

Lock Nut

Order Coding	Model No.	Surface treatment	Max Tightening (kgf-cm)
RN05	M5 x P0.5	Black Oxide	
RN05_N		Electyless Nickel Plating	
RN06	M6 x P0.75	Black Oxide	25
RN06_N		Electyless Nickel Plating	
RN08	M8 x P1.0	Black Oxide	50
RN08_N		Electyless Nickel Plating	
RN10	M10 x P1.0	Black Oxide	95
RN10_N		Electyless Nickel Plating	
RN12	M12 x P1.0	Black Oxide	140
RN12_N		Electyless Nickel Plating	
RN15	M15 x P1.0	Black Oxide	240
RN15_N		Electyless Nickel Plating	
RN17	M17 x P1.0	Black Oxide	550
RN17_N		Electyless Nickel Plating	
RN17W	M17 x P1.0 (for WBK17-31)	Black Oxide	550
RN17W_N		Electyless Nickel Plating	
RN20	M20 x P1.0	Black Oxide	480
RN20_N		Electyless Nickel Plating	
RN20W	M20 x P1.0 (for WBK17-31)	Black Oxide	750
RN20W_N		Electyless Nickel Plating	
RN25	M25 x P1.5	Black Oxide	860
RN25_N		Electyless Nickel Plating	
RN25W	M25 x P1.5 (for WBK17-31)	Black Oxide	1350
RN25W_N		Electyless Nickel Plating	
RN30	M30 x P1.5	Black Oxide	2000
RN30_N		Electyless Nickel Plating	
RN30W	M30 x P1.5 (for WBK17-31)	Black Oxide	2000
RN30W_N		Electyless Nickel Plating	
RN35	M35 x P1.5	Black Oxide	3000
RN35_N		Electyless Nickel Plating	
RN35W	M35 x P1.5 (for WBK17-31)	Black Oxide	3000
RN35W_N		Electyless Nickel Plating	
RN40	M40 x P1.5	Black Oxide	4000
RN40_N		Electyless Nickel Plating	
RN40W	M40 x P1.5 (for WBK17-31)	Black Oxide	4000
RN40W_N		Electyless Nickel Plating	



Black Oxide
(Fit for normal conditions)



Nickel Plating
(fit for dust-free conditions)



Black Oxide
(Fit for normal conditions)

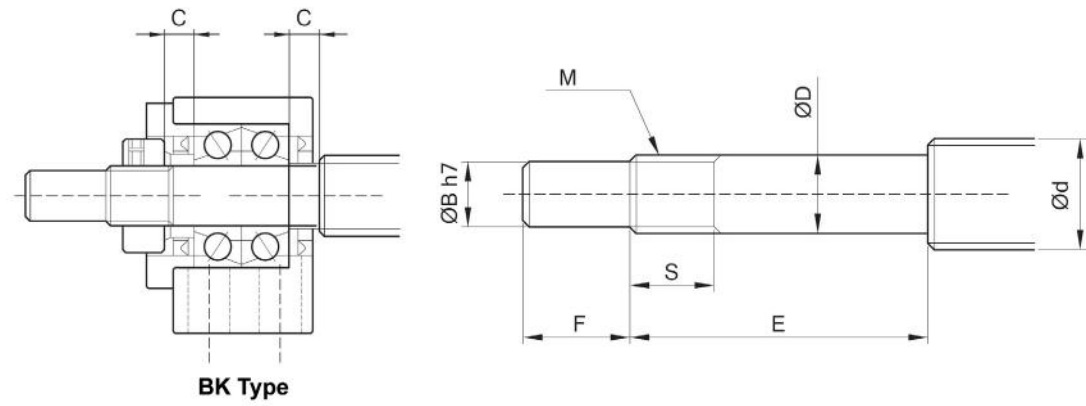


Nickel Plating
(fit for dust-free conditions)

Support Unit

Suggested Mounting End

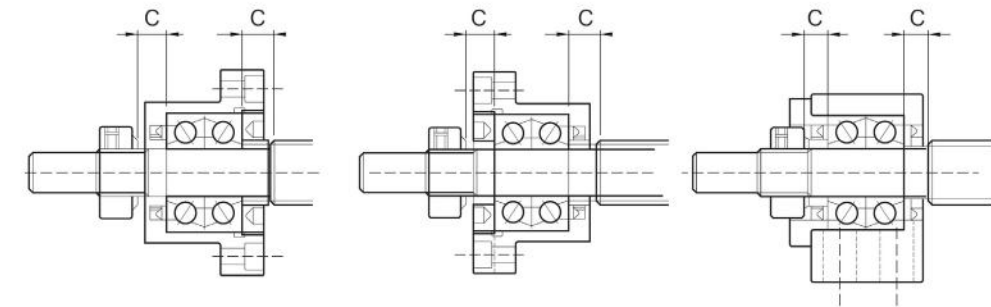
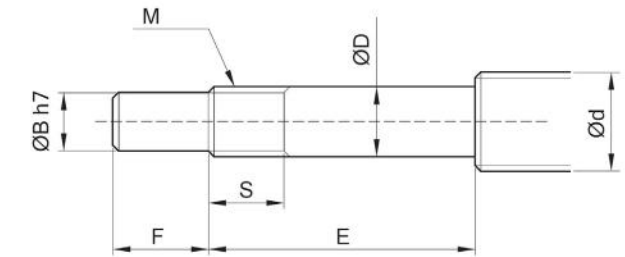
BK Type



Model No	OD of the ballscrew	OD of the shaft end		B	E	F	Thread		Length of the Sleeve Nut
	d	D					M	S	
BK10	12/14/15	10	-0.005	8	36	15	M10x1	16	5.5
			-0.012						
BK12	14/15/16	12	-0.005	10	36	15	M12x1	14	5.5
			-0.012						
BK15	18/20	15	-0.005	12	40	20	M15x1	12	6
			-0.014						
BK17	20/25	17	-0.005	15	53	23	M17x1	17	7
			-0.014						
BK20	25/28	20	-0.005	17	53	25	M20x1	15	8
			-0.014						
BK25	32/36	25	-0.005	20	65	30	M25x1.5	18	9
			-0.014						
BK30	36/40	30	-0.005	25	72	38	M30x1.5	25	9
			-0.015						
BK35	45	35	-0.005	30	81	45	M35x1.5	28	12
			-0.015						
BK40	50	40	-0.005	35	93	50	M40x1.5	35	15
			-0.015						

Support Unit

FK, EK, AK Type



FK 型

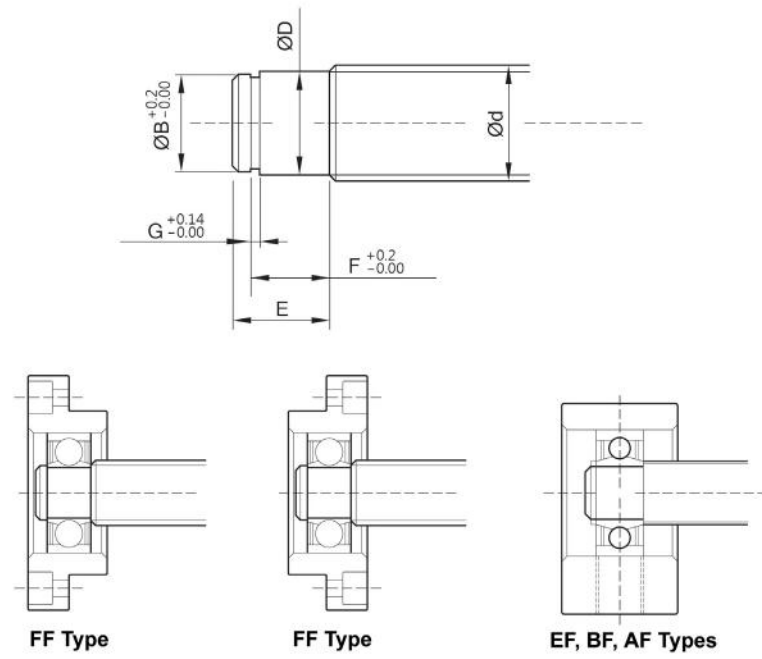
FK 型

EK, AK 型

Model No			OD of the ballscrew	OD of the shaft end		B	E	F	Thread		Length of the sleeve nut
			d	D					M	S	
FK05	EK05	-	8	5	-0.005	4	25	6	M5x0.5	7	3.5
					-0.012						
FK06	EK06	-	8	6	-0.005	4	28	8	M6x0.75	8	5
					-0.012						
FK08	EK08	-	10/12	8	-0.005	6	32	9	M8x1	10	5.5
					-0.012						
FK10	EK10	AK10	12/14/15	10	-0.005	8	36	15	M10x1	11	5.5
					-0.012						
FK12	EK12	AK12	14/15/16	12	-0.005	10	36	15	M12x1	11	5.5
					-0.012						
FK15	EK15	AK15	18/20	15	-0.005	12	40	20	M15x1	13	10
					-0.014						
FK17	-	-	20/25	17	-0.005	15	53	23	M17x1	15	10
					-0.014						
FK20	EK20	AK20	25/28	20	-0.005	17	53	25	M20x1	17	11
					-0.014						
FK25	-	-	32/36	25	-0.005	20	65	30	M25x1.5	20	15
					-0.014						
FK30	-	-	36/40	30	-0.005	25	72	38	M30x1.5	25	9
					-0.015						

Support Unit

FF, EF, BF, AF Type



Model No.				OD of the ballscrew d	OD of the shaft end		E	B	F	G
					D					
FF06	EF06	-	-	8	6	-0.005	9	5.7	6.8	0.8
						-0.012				
-	EF08	-	-	10	6	-0.005	9	5.7	6.8	0.8
FF10	EF10	BF10	AF10	12/14/15	8	-0.005	10	7.6	7.9	0.9
FF12	EF12	BF12	AF12	14/15/16	10	-0.005	11	9.6	9.15	1.15
FF15	EF15	BF15	AF15	18/20	15	-0.005	13	14.3	10.15	1.15
FF17	-	BF17	-	20/25	17	-0.005	16	16.2	13.15	1.15
FF20	EF20	BF20 *	AF20	25/28/30	20	-0.005	19(16)	19	15.35(13.35)	1.35
FF25	-	BF25	-	30/32/36	25	-0.005	20	23.9	16.35	1.35
FF30	-	BF30	-	36/40	30	-0.005	21	28.6	17.75	1.75
-	-	BF35	-	40/45	35	-0.005	22	33	18.75	1.75
-	-	BF40	-	50	40	-0.005	23	38	19.75	1.95

SCREW TECHNOLOGY CO.,LTD.

Add: No 988, Wsong Road, Wuzhong District, Suzhou, China
 Tel: +86-0512-66903936, +86-0512-65073935
 E-mail: IMD@screwtech.cn
 Web: <http://www.screw-tech.com/>